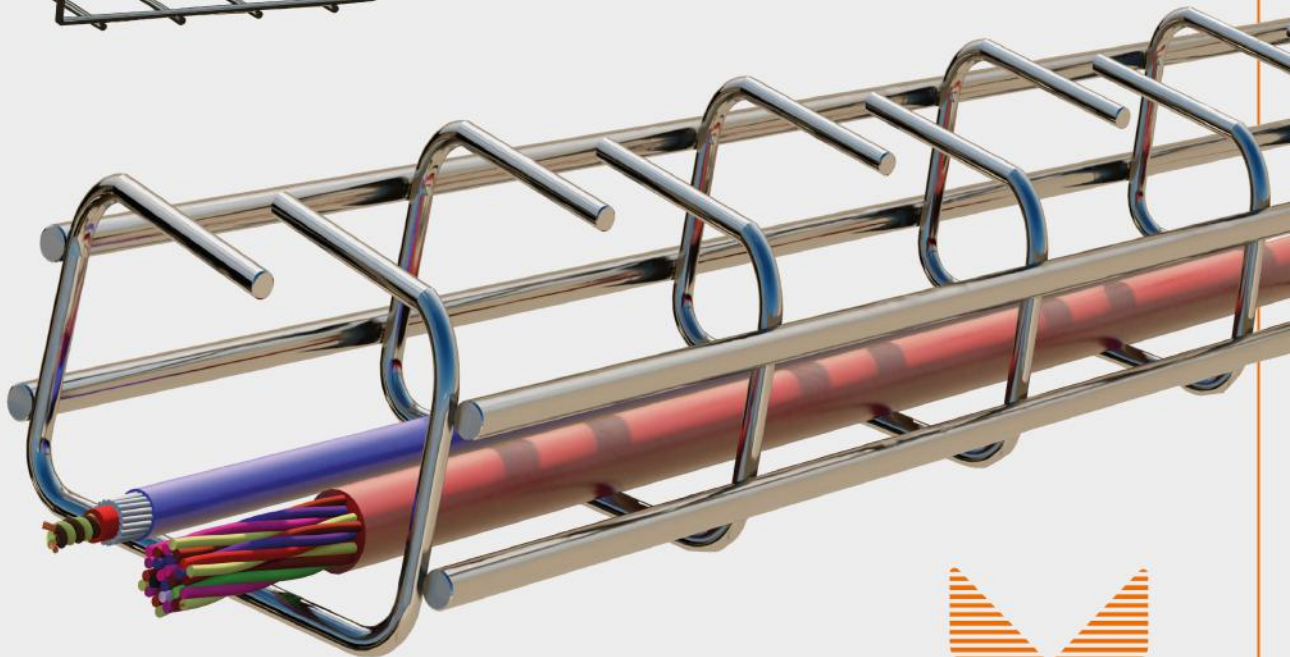
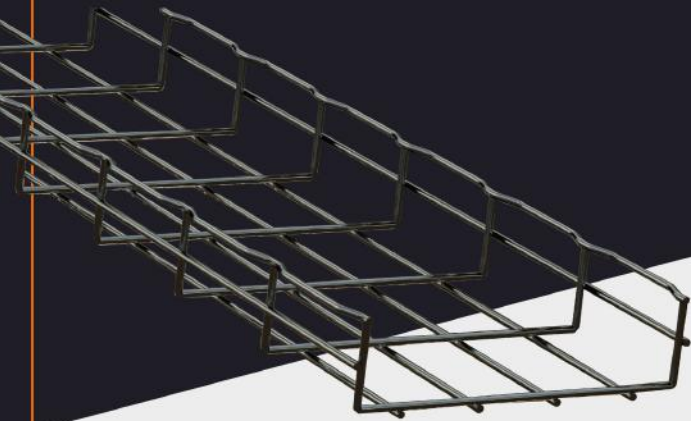


Always
Better
Together

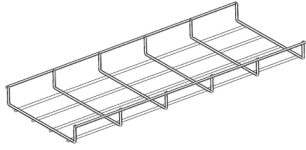


CK Cable Tray
Systems



E-Catalog





(EG / HDG) H35 Wiremesh Cable Trays

With a width up to 600 mm / height up to 100 mm

It is possible to carry a lot of amount of cable with a width of up to 1000 mm.

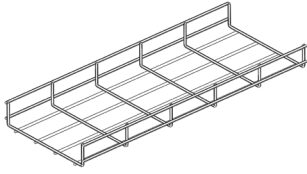
Wiremesh Trays can be installed quickly. It provides economic and easy working opportunities.

Ergonomic operation in every assembly area with its suitable design for all cable carrying systems.

info@ckcabletray.com
+90 542 123 35 75

/ Cable Tray / EG H35 Wiremesh Cable Trays

PRODUCT CODE	HEIGHT	WIDTH	THICKNESS ± % 10	WEIGHT (KG/MT)
WM3 050 4CT E	35	50	4	0,378
WM3 100 4CT E	35	100	4	0,506
WM3 150 4CT E	35	150	4	0,635
WM3 200 4CT E	35	200	4	0,764
WM3 250 4CT E	35	250	4	0,893
WM3 300 4CT E	35	300	4	1,022
WM3 350 4CT E	35	350	4	1,150
WM3 400 4CT E	35	400	4	1,279
WM3 450 4CT E	35	450	4	1,408
WM3 500 4CT E	35	500	4	1,537
WM3 550 4CT E	35	550	4	1,666
WM3 600 4CT E	35	600	4	1,794
WM3 050 5CT E	35	50	5	0,609
WM3 100 5CT E	35	100	5	0,817
WM3 150 5CT E	35	150	5	1,025
WM3 200 5CT E	35	200	5	1,233
WM3 250 5CT E	35	250	5	1,441
WM3 300 5CT E	35	300	5	1,648
WM3 350 5CT E	35	350	5	1,856
WM3 400 5CT E	35	400	5	2,064
WM3 450 5CT E	35	450	5	2,272
WM3 500 5CT E	35	500	5	2,480
WM3 550 5CT E	35	550	5	2,688
WM3 600 5CT E	35	600	5	2,895



(EG / HDG) H55 Wiremesh Cable Trays

With a width up to 600 mm / height up to 100 mm

It is possible to carry a lot of amount of cable with a width of up to 1000 mm.

Wiremesh Trays can be installed quickly. It provides economic and easy working opportunities.

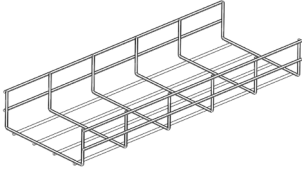
Ergonomic operation in every assembly area with its suitable design for all cable carrying systems.

info@ckcabletray.com
+90 542 123 35 75

/ Cable Tray / EG H55 Wiremesh Cable Trays

PRODUCT CODE	HEIGHT	WIDTH	THICKNESS ± % 10	WEIGHT (KG/MT)
WM5 050 4CT E	55	50	4	0,574
WM5 100 4CT E	55	100	4	0,703
WM5 150 4CT E	55	150	4	0,832
WM5 200 4CT E	55	200	4	0,961
WM5 250 4CT E	55	250	4	1,089
WM5 300 4CT E	55	300	4	1,218
WM5 350 4CT E	55	350	4	1,347
WM5 400 4CT E	55	400	4	1,476
WM5 450 4CT E	55	450	4	1,605
WM5 500 4CT E	55	500	4	1,862
WM5 550 4CT E	55	550	4	1,862
WM5 600 4CT E	55	600	4	1,991
WM5 050 5CT E	55	50	5	0,927
WM5 100 5CT E	55	100	5	1,134
WM5 150 5CT E	55	150	5	1,342
WM5 200 5CT E	55	200	5	1,550
WM5 250 5CT E	55	250	5	1,758
WM5 300 5CT E	55	300	5	1,966
WM5 350 5CT E	55	350	5	2,173
WM5 400 5CT E	55	400	5	2,381
WM5 450 5CT E	55	450	5	2,589
WM5 500 5CT E	55	500	5	3,005
WM5 550 5CT E	55	550	5	3,005

(EG / HDG) H75 Wiremesh Cable Trays



With a width up to 600 mm / height up to 100 mm

It is possible to carry a lot of amount of cable with a width of up to 1000 mm.

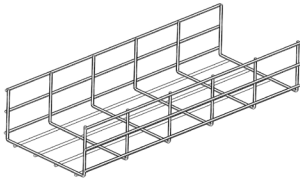
Wiremesh Trays can be installed quickly. It provides economic and easy working opportunities.

Ergonomic operation in every assembly area with its suitable design for all cable carrying systems.

info@ckcabletray.com
+90 542 123 35 75

/ Cable Tray / EG H75 Wiremesh Cable Trays

PRODUCT CODE	HEIGHT	WIDTH	THICKNESS ± % 10	WEIGHT (KG/MT)
WM7 100 4CT E	75	100	4	0,755
WM7 150 4CT E	75	150	4	0,884
WM7 200 4CT E	75	200	4	1,013
WM7 250 4CT E	75	250	4	1,142
WM7 300 4CT E	75	300	4	1,270
WM7 350 4CT E	75	350	4	1,399
WM7 400 4CT E	75	400	4	1,528
WM7 450 4CT E	75	450	4	1,657
WM7 500 4CT E	75	500	4	1,786
WM7 550 4CT E	75	550	4	1,914
WM7 600 4CT E	75	600	4	2,043
WM7 100 5CT E	75	100	5	1,219
WM7 150 5CT E	75	150	5	1,427
WM7 200 5CT E	75	200	5	1,634
WM7 250 5CT E	75	250	5	1,842
WM7 300 5CT E	75	300	5	2,050
WM7 350 5CT E	75	350	5	2,258
WM7 400 5CT E	75	400	5	2,466
WM7 450 5CT E	75	450	5	2,673
WM7 500 5CT E	75	500	5	2,881
WM7 550 5CT E	75	550	5	3,089



(EG / HDG) H105 Wiremesh Cable Trays

With a width up to 600 mm / height up to 100 mm

It is possible to carry a lot of amount of cable with a width of up to 1000 mm.

Wiremesh Trays can be installed quickly. It provides economic and easy working opportunities.

Ergonomic operation in every assembly area with its suitable design for all cable carrying systems.

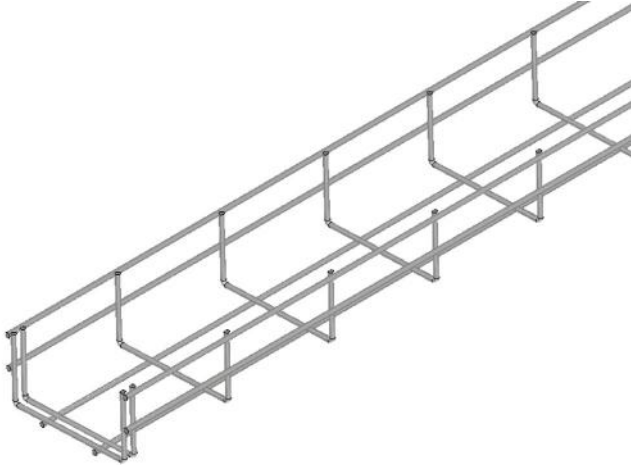
info@ckcabletray.com
+90 542 123 35 75

/ Cable Tray / EG H100 Wiremesh Cable Trays

PRODUCT CODE	HEIGHT	WIDTH	THICKNESS ± % 10	WEIGHT (KG/MT)
WM1 100 4CT E	105	100	4	0,961
WM1 150 4CT E	105	150	4	1,089
WM1 200 4CT E	105	200	4	1,218
WM1 250 4CT E	105	250	4	1,347
WM1 300 4CT E	105	300	4	1,476
WM1 350 4CT E	105	350	4	1,605
WM1 400 4CT E	105	400	4	1,733
WM1 450 4CT E	105	450	4	1,862
WM1 500 4CT E	105	500	4	1,991
WM1 550 4CT E	105	550	4	2,120
WM1 600 4CT E	105	600	4	2,249
WM1 100 5CT E	105	100	5	1,550
WM1 150 5CT E	105	150	5	1,758
WM1 200 5CT E	105	200	5	1,966
WM1 250 5CT E	105	250	5	2,173
WM1 300 5CT E	105	300	5	2,381
WM1 350 5CT E	105	350	5	2,589
WM1 400 5CT E	105	400	5	2,797
WM1 450 5CT E	105	450	5	3,005
WM1 500 5CT E	105	500	5	3,213
WM1 550 5CT E	105	550	5	3,420

(EG / HDG / SS304 / SS316) H35-105 Double Wire Mesh

With a width up to 600 mm / height up to 100 mm

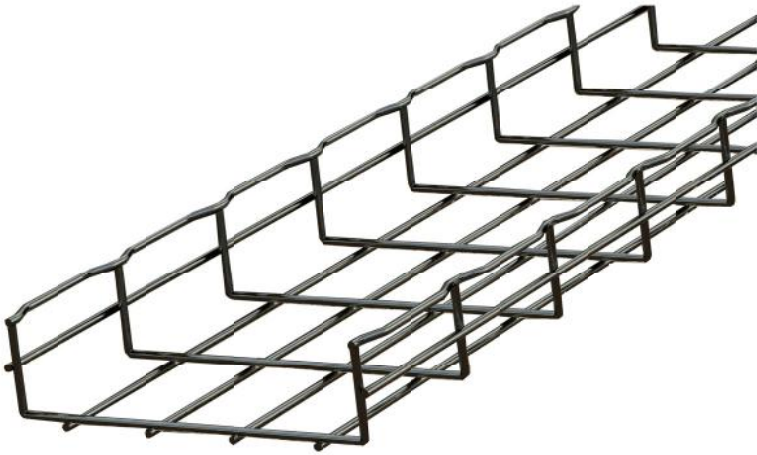


/ Cable Tray / EG H55 Wiremesh Cable Trays

PRODUCT CODE	HEIGHT	WIDTH	THICKNESS \pm % 10	WEIGHT (KG/MT)
WM5 050 4CT E	35-105	50	4-5	0,574
WM5 100 4CT E	35-105	100	4-5	0,703
WM5 150 4CT E	35-105	150	4-5	0,832
WM5 200 4CT E	35-105	200	4-5	0,961
WM5 250 4CT E	35-105	250	4-5	1,089
WM5 300 4CT E	35-105	300	4-5	1,218
WM5 350 4CT E	35-105	350	4-5	1,347
WM5 400 4CT E	35-105	400	4-5	1,476
WM5 450 4CT E	35-105	450	4-5	1,605
WM5 500 4CT E	35-105	500	4-5	1,862
WM5 550 4CT E	35-105	550	4-5	1,862
WM5 600 4CT E	35-105	600	4-5	1,991

(EG / HDG / SS304 / SS316) H35-105 Waved Wire Mesh Cable Tray

With a width up to 600 mm / height up to 100 mm



/ Cable Tray / EG H55 Wiremesh Cable Trays

PRODUCT CODE	HEIGHT	WIDTH	THICKNESS \pm % 10	WEIGHT (KG/MT)
WM5 050 4CT E	35-105	50	4-5	0,574
WM5 100 4CT E	35-105	100	4-5	0,703
WM5 150 4CT E	35-105	150	4-5	0,832
WM5 200 4CT E	35-105	200	4-5	0,961
WM5 250 4CT E	35-105	250	4-5	1,089
WM5 300 4CT E	35-105	300	4-5	1,218
WM5 350 4CT E	35-105	350	4-5	1,347
WM5 400 4CT E	35-105	400	4-5	1,476
WM5 450 4CT E	35-105	450	4-5	1,605
WM5 500 4CT E	35-105	500	4-5	1,862
WM5 550 4CT E	35-105	550	4-5	1,862
WM5 600 4CT E	35-105	600	4-5	1,991

(EG / HDG / SS304 / SS316) H35-105 Curved Wire Mesh

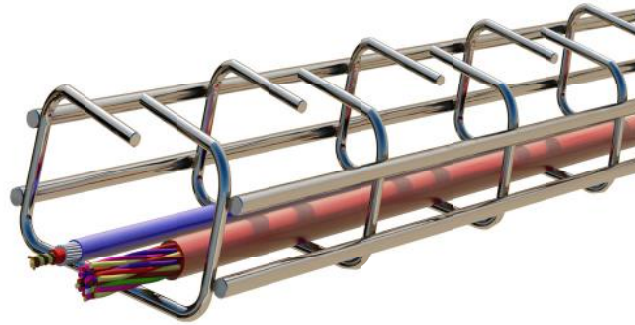
With a width up to 600 mm / height up to 100 mm



PRODUCT CODE	HEIGHT	WIDTH	THICKNESS \pm % 10	WEIGHT (KG/MT)
WM5 050 4CT E	35-105	50	4-5	0,574
WM5 100 4CT E	35-105	100	4-5	0,703
WM5 150 4CT E	35-105	150	4-5	0,832
WM5 200 4CT E	35-105	200	4-5	0,961
WM5 250 4CT E	35-105	250	4-5	1,089
WM5 300 4CT E	35-105	300	4-5	1,218
WM5 350 4CT E	35-105	350	4-5	1,347
WM5 400 4CT E	35-105	400	4-5	1,476
WM5 450 4CT E	35-105	450	4-5	1,605
WM5 500 4CT E	35-105	500	4-5	1,862
WM5 550 4CT E	35-105	550	4-5	1,862
WM5 600 4CT E	35-105	600	4-5	1,991
WM5 050 5CT E	55	50	5	0,927

(EG / HDG / SS304 / SS316) H35-105 Self Lock Wire

With a width up to 600 mm / height up to 100 mm

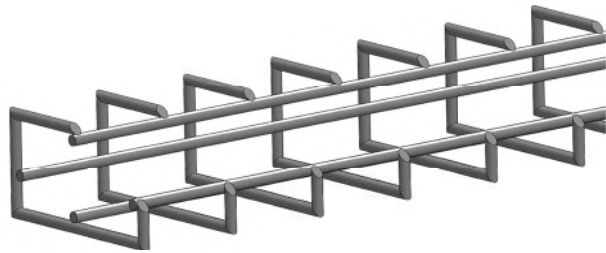
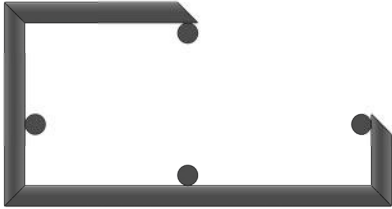


PRODUCT CODE	HEIGHT	WIDTH	THICKNESS ± % 10	WEIGHT (KG/MT)
WM5 050 4CT E	35-105	50	4-5	0,574
WM5 100 4CT E	35-105	100	4-5	0,703
WM5 150 4CT E	35-105	150	4-5	0,832
WM5 200 4CT E	35-105	200	4-5	0,961
WM5 250 4CT E	35-105	250	4-5	1,089
WM5 300 4CT E	35-105	300	4-5	1,218
WM5 350 4CT E	35-105	350	4-5	1,347
WM5 400 4CT E	35-105	400	4-5	1,476
WM5 450 4CT E	35-105	450	4-5	1,605
WM5 500 4CT E	35-105	500	4-5	1,862
WM5 550 4CT E	35-105	550	4-5	1,862
WM5 600 4CT E	35-105	600	4-5	1,991

(EG / HDG / SS304 / SS316) H35-105 G-Type

Mesh Cable Tray

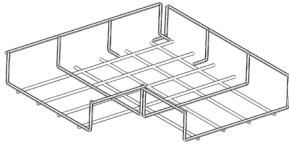
With a width up to 600 mm / height up to 100 mm



PRODUCT CODE	HEIGHT	WIDTH	THICKNESS \pm % 10	WEIGHT (KG/MT)
WM5 050 4CT E	35-105	50	4-5	0,574
WM5 100 4CT E	35-105	100	4-5	0,703
WM5 150 4CT E	35-105	150	4-5	0,832
WM5 200 4CT E	35-105	200	4-5	0,961
WM5 250 4CT E	35-105	250	4-5	1,089
WM5 300 4CT E	35-105	300	4-5	1,218
WM5 350 4CT E	35-105	350	4-5	1,347
WM5 400 4CT E	35-105	400	4-5	1,476
WM5 450 4CT E	35-105	450	4-5	1,605
WM5 500 4CT E	35-105	500	4-5	1,862
WM5 550 4CT E	35-105	550	4-5	1,862
WM5 600 4CT E	35-105	600	4-5	1,991
WM5 050 5CT E	55	50	5	0,927



(EG / HDG / SS304 / SS316) H35 Wiremesh Cable Tray 90° Bends



It is possible to carry a lot of amount of cable with a width of up to 1000 mm.

Wiremesh Trays can be installed quickly. It provides economic and easy working opportunities.

Ergonomic operation in every assembly area with its suitable design for all cable carrying systems.

info@ckcabletray.com
+90 542 123 35 75

/ Wiremesh Cable Tray / H35 EG 90° Bends

PRODUCT CODE	HEIGHT	WIDTH	THICKNESS ± % 10	WEIGHT (KG/PCS)
WM3 050 4LB E	35	50	4	0,108
WM3 100 4LB E	35	100	4	0,192
WM3 150 4LB E	35	150	4	0,302
WM3 200 4LB E	35	200	4	0,435
WM3 250 4LB E	35	250	4	0,594
WM3 300 4LB E	35	300	4	0,776
WM3 350 4LB E	35	350	4	0,984
WM3 400 4LB E	35	400	4	1,215
WM3 450 4LB E	35	450	4	1,471
WM3 500 4LB E	35	500	4	1,752
WM3 550 4LB E	35	550	4	2,057
WM3 600 4LB E	35	600	4	2,387
WM3 050 5LB E	35	50	5	0,174
WM3 100 5LB E	35	100	5	0,311
WM3 150 5LB E	35	150	5	0,487
WM3 200 5LB E	35	200	5	0,703
WM3 250 5LB E	35	250	5	0,958
WM3 300 5LB E	35	300	5	1,253
WM3 350 5LB E	35	350	5	1,587
WM3 400 5LB E	35	400	5	1,961
WM3 450 5LB E	35	450	5	2,374
WM3 500 5LB E	35	500	5	2,827
WM3 550 5LB E	35	550	5	3,319
WM3 600 5LB E	35	600	5	3,851

(EG / HDG / SS304 / SS316) H55 Wiremesh Cable Tray 90° Bends

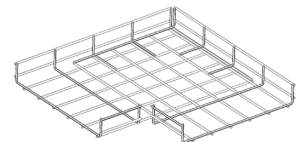
With a width up to 600 mm / height up to 100 mm

It is possible to carry a lot of amount of cable with a width of up to 1000 mm.

Wiremesh Trays can be installed quickly. It provides economic and easy working opportunities.

Ergonomic operation in every assembly area with its suitable design for all cable carrying systems.

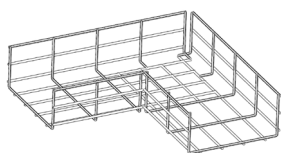
info@ckcabletray.com
+90 542 123 35 75



/ Wiremesh Cable Tray / H50 EG 90° Bends

PRODUCT CODE	HEIGHT	WIDTH	THICKNESS ± % 10	WEIGHT (KG/PCS)
WM5 050 4LB E	55	50	4	0,164
WM5 100 4LB E	55	100	4	0,267
WM5 150 4LB E	55	150	4	0,395
WM5 200 4LB E	55	200	4	0,548
WM5 250 4LB E	55	250	4	0,724
WM5 300 4LB E	55	300	4	0,926
WM5 350 4LB E	55	350	4	1,152
WM5 400 4LB E	55	400	4	1,402
WM5 450 4LB E	55	450	4	1,677
WM5 500 4LB E	55	500	4	2,123
WM5 550 4LB E	55	550	4	2,300
WM5 600 4LB E	55	600	4	2,648
WM5 050 5LB E	55	50	5	0,264
WM5 100 5LB E	55	100	5	0,431
WM5 150 5LB E	55	150	5	0,638
WM5 200 5LB E	55	200	5	0,883
WM5 250 5LB E	55	250	5	1,169
WM5 300 5LB E	55	300	5	1,494
WM5 350 5LB E	55	350	5	1,858
WM5 400 5LB E	55	400	5	2,262
WM5 450 5LB E	55	450	5	2,706
WM5 500 5LB E	55	500	5	3,425
WM5 550 5LB E	55	550	5	3,711
WM5 600 5LB E	55	600	5	4,273

(EG / HDG / SS304 / SS316) H75 Wiremesh Cable Tray 90° Bends



With a width up to 600 mm / height up to 100 mm

It is possible to carry a lot of amount of cable with a width of up to 1000 mm.

Wiremesh Trays can be installed quickly. It provides economic and easy working opportunities.

Ergonomic operation in every assembly area with its suitable design for all cable carrying systems.

info@ckcabletray.com
+90 542 123 35 75

/ Wiremesh Cable Tray / H75 EG 90° Bends

PRODUCT CODE	HEIGHT	WIDTH	THICKNESS ± % 10	WEIGHT (KG/PCS)
WM7 100 4LB E	75	100	4	0,287
WM7 150 4LB E	75	150	4	0,420
WM7 200 4LB E	75	200	4	0,577
WM7 250 4LB E	75	250	4	0,759
WM7 300 4LB E	75	300	4	0,966
WM7 350 4LB E	75	350	4	1,196
WM7 400 4LB E	75	400	4	1,452
WM7 450 4LB E	75	450	4	1,731
WM7 500 4LB E	75	500	4	2,036
WM7 550 4LB E	75	550	4	2,364
WM7 600 4LB E	75	600	4	2,717
WM7 100 5LB E	75	100	5	0,463
WM7 150 5LB E	75	150	5	0,678
WM7 200 5LB E	75	200	5	0,932
WM7 250 5LB E	75	250	5	1,225
WM7 300 5LB E	75	300	5	1,558
WM7 350 5LB E	75	350	5	1,930
WM7 400 5LB E	75	400	5	2,342
WM7 450 5LB E	75	450	5	2,794
WM7 500 5LB E	75	500	5	3,285

(EG / HDG / SS304 / SS316) H105 Wiremesh

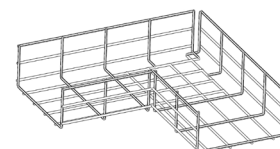
With a width up to 600 mm / height up to 100 mm

It is possible to carry a lot of amount of cable with a width of up to 1000 mm.

Wiremesh Trays can be installed quickly. It provides economic and easy working opportunities.

Ergonomic operation in every assembly area with its suitable design for all cable carrying systems.

info@ckcabletray.com
+90 542 123 35 75



/ Wiremesh Cable Tray / H100 EG 90° Bends

PRODUCT CODE	HEIGHT	WIDTH	THICKNESS ± % 10	WEIGHT (KG/PCS)
WM1 100 4LB E	105	100	4	0,365
WM1 150 4LB E	105	150	4	0,517
WM1 200 4LB E	105	200	4	0,694
WM1 250 4LB E	105	250	4	0,896
WM1 300 4LB E	105	300	4	1,122
WM1 350 4LB E	105	350	4	1,372
WM1 400 4LB E	105	400	4	1,647
WM1 450 4LB E	105	450	4	1,946
WM1 500 4LB E	105	500	4	2,270
WM1 550 4LB E	105	550	4	2,618
WM1 600 4LB E	105	600	4	2,991
WM1 100 5LB E	105	100	5	0,589
WM1 150 5LB E	105	150	5	0,835
WM1 200 5LB E	105	200	5	1,120
WM1 250 5LB E	105	250	5	1,445
WM1 300 5LB E	105	300	5	1,810
WM1 350 5LB E	105	350	5	2,214
WM1 400 5LB E	105	400	5	2,657
WM1 450 5LB E	105	450	5	3,140
WM1 500 5LB E	105	500	5	3,662

(EG / HDG / SS304 / SS316) H35-105

Wiremesh Cable Tray Tee Bends

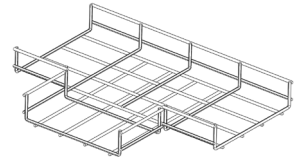
With a width up to 600 mm / height up to 100 mm

It is possible to carry a lot of amount of cable with a width of up to 1000 mm.

Wiremesh Trays can be installed quickly. It provides economic and easy working opportunities.

Ergonomic operation in every assembly area with its suitable design for all cable carrying systems.

info@ckcabletray.com
+90 542 123 35 75



/ Wiremesh Cable Tray / H50 EG Tee Bends

PRODUCT CODE	HEIGHT	WIDTH	THICKNESS ± % 10	WEIGHT (KG/PCS)
WM5 050 4TB E	35-105	50	4	0,218
WM5 100 4TB E	35-105	100	4	0,334
WM5 150 4TB E	35-105	150	4	0,474
WM5 200 4TB E	35-105	200	4	0,639
WM5 250 4TB E	35-105	250	4	0,828
WM5 300 4TB E	35-105	300	4	1,042
WM5 350 4TB E	35-105	350	4	1,280
WM5 400 4TB E	35-105	400	4	1,542
WM5 450 4TB E	35-105	450	4	1,829
WM5 500 4TB E	35-105	500	4	2,300
WM5 550 4TB E	35-105	550	4	2,477
WM5 600 4TB E	35-105	600	4	2,837
WM5 050 5TB E	35-105	50	5	0,352
WM5 100 5TB E	35-105	100	5	0,539
WM5 150 5TB E	35-105	150	5	0,765
WM5 200 5TB E	35-105	200	5	1,031
WM5 250 5TB E	35-105	250	5	1,336
WM5 300 5TB E	35-105	300	5	1,681
WM5 350 5TB E	35-105	350	5	2,065
WM5 400 5TB E	35-105	400	5	2,488
WM5 450 5TB E	35-105	450	5	2,952
WM5 500 5TB E	35-105	500	5	3,711
WM5 550 5TB E	35-105	550	5	3,996
WM5 600 5TB E	35-105	600	5	4,578

(EG / HDG / SS304 / SS316) H35-105

Wiremesh Cable Tray Four Way Bends

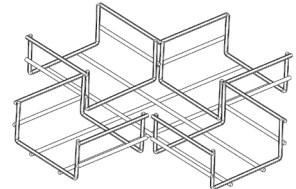
With a width up to 600 mm / height up to 100 mm

It is possible to carry a lot of amount of cable with a width of up to 1000 mm.

Wiremesh Trays can be installed quickly. It provides economic and easy working opportunities.

Ergonomic operation in every assembly area with its suitable design for all cable carrying systems.

info@ckcabletray.com
+90 542 123 35 75



/ Wiremesh Cable Tray / H50 EG Four Way Bends

PRODUCT CODE	HEIGHT	WIDTH	THICKNESS ± % 10	WEIGHT (KG/PCS)
WM5 050 4FB E	35-105	50	4	0,273
WM5 100 4FB E	35-105	100	4	0,401
WM5 150 4FB E	35-105	150	4	0,553
WM5 200 4FB E	35-105	200	4	0,730
WM5 250 4FB E	35-105	250	4	0,931
WM5 300 4FB E	35-105	300	4	1,157
WM5 350 4FB E	35-105	350	4	1,408
WM5 400 4FB E	35-105	400	4	1,682
WM5 450 4FB E	35-105	450	4	1,982
WM5 500 4FB E	35-105	500	4	2,477
WM5 550 4FB E	35-105	550	4	2,654
WM5 600 4FB E	35-105	600	4	3,026
WM5 050 5FB E	35-105	50	5	0,440
WM5 100 5FB E	35-105	100	5	0,647
WM5 150 5FB E	35-105	150	5	0,893
WM5 200 5FB E	35-105	200	5	1,178
WM5 250 5FB E	35-105	250	5	1,503
WM5 300 5FB E	35-105	300	5	1,867
WM5 350 5FB E	35-105	350	5	2,271
WM5 400 5FB E	35-105	400	5	2,715
WM5 450 5FB E	35-105	450	5	3,198
WM5 500 5FB E	35-105	500	5	3,996
WM5 550 5FB E	35-105	550	5	4,282
WM5 600 5FB E	35-105	600	5	4,883

(EG / HDG / SS304 / SS316) H35-105 Wiremesh Cable Tray 90° Inside-Outside Bends

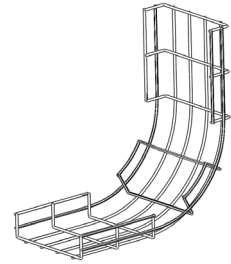
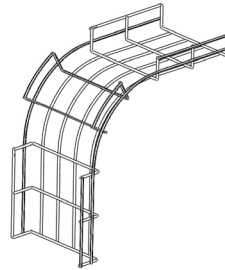
With a width up to 600 mm / height up to 100 mm

It is possible to carry a lot of amount of cable with a width of up to 1000 mm.

Wiremesh Trays can be installed quickly. It provides economic and easy working opportunities.

Ergonomic operation in every assembly area with its suitable design for all cable carrying systems.

info@ckcabletray.com
+90 542 123 35 75



/ Wiremesh Cable Tray / H50 EG 90° Inside Bends

PRODUCT CODE	HEIGHT	WIDTH	THICKNESS ± % 10	WEIGHT (KG/PCS)
WM5 050 4IB E	35-105	50	4	0,382
WM5 100 4IB E	35-105	100	4	0,468
WM5 150 4IB E	35-105	150	4	0,553
WM5 200 4IB E	35-105	200	4	0,639
WM5 250 4IB E	35-105	250	4	0,724
WM5 300 4IB E	35-105	300	4	0,810
WM5 350 4IB E	35-105	350	4	0,896
WM5 400 4IB E	35-105	400	4	0,981
WM5 450 4IB E	35-105	450	4	1,067
WM5 500 4IB E	35-105	500	4	1,238
WM5 550 4IB E	35-105	550	4	1,238
WM5 600 4IB E	35-105	600	4	1,324
WM5 050 5IB E	35-105	50	5	0,616
WM5 100 5IB E	35-105	100	5	0,754
WM5 150 5IB E	35-105	150	5	0,893
WM5 200 5IB E	35-105	200	5	1,031
WM5 250 5IB E	35-105	250	5	1,169
WM5 300 5IB E	35-105	300	5	1,307
WM5 350 5IB E	35-105	350	5	1,445
WM5 400 5IB E	35-105	400	5	1,584
WM5 450 5IB E	35-105	450	5	1,722
WM5 500 5IB E	35-105	500	5	1,998
WM5 550 5IB E	35-105	550	5	1,998
WM5 600 5IB E	35-105	600	5	2,136

(EG / HDG / SS304 / SS316) H35-105 Standart Fast & Safe Connector



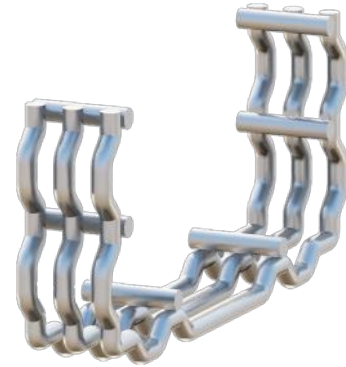
With a width up to 600 mm / height up to 100 mm

It is possible to carry a lot of amount of cable with a width of up to 1000 mm.

Wiremesh Trays can be installed quickly. It provides economic and easy working opportunities.

Ergonomic operation in every assembly area with its suitable design for all cable carrying systems.

info@ckcabletray.com
+90 542 123 35 75



/ Wiremesh Cable Tray Carrier / U Type Carriers

PRODUCT CODE	HEIGHT	WIDTH	THICKNESS ± % 10	WEIGHT (KG/PCS)
WMS 060 P	35-105	60	2,0	0,135
WMS 100 P	35-105	110	2,0	0,177
WMS 150 P	35-105	160	2,0	0,219
WMS 200 P	35-105	210	2,0	0,261
WMS 250 P	35-105	260	2,0	0,303
WMS 300 P	35-105	310	2,0	0,345
WMS 060 H	35-105	60	2,0	0,140
WMS 100 H	35-105	110	2,0	0,184
WMS 150 H	35-105	160	2,0	0,228
WMS 200 H	35-105	210	2,0	0,272
WMS 250 H	35-105	260	2,0	0,315

(EG / HDG / SS304 / SS316) H35-105

Handle Heavy Duty Fast & Safe Connector



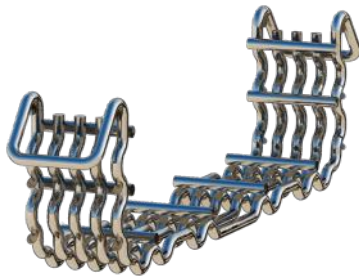
With a width up to 600 mm / height up to 100 mm

It is possible to carry a lot of amount of cable with a width of up to 1000 mm.

Wiremesh Trays can be installed quickly. It provides economic and easy working opportunities.

Ergonomic operation in every assembly area with its suitable design for all cable carrying systems.

info@ckcabletray.com
+90 542 123 35 75



/ Wiremesh Cable Tray Carrier / U Type Carriers

PRODUCT CODE	HEIGHT	WIDTH	THICKNESS \pm % 10	WEIGHT (KG/PCS)
WMS 060 P	35-105	60	2,0	0,135
WMS 100 P	35-105	110	2,0	0,177
WMS 150 P	35-105	160	2,0	0,219
WMS 200 P	35-105	210	2,0	0,261
WMS 250 P	35-105	260	2,0	0,303
WMS 300 P	35-105	310	2,0	0,345
WMS 060 H	35-105	60	2,0	0,140
WMS 100 H	35-105	110	2,0	0,184
WMS 150 H	35-105	160	2,0	0,228
WMS 200 H	35-105	210	2,0	0,272
WMS 250 H	35-105	260	2,0	0,315

(EG / HDG / SS304 / SS316) Wall Support

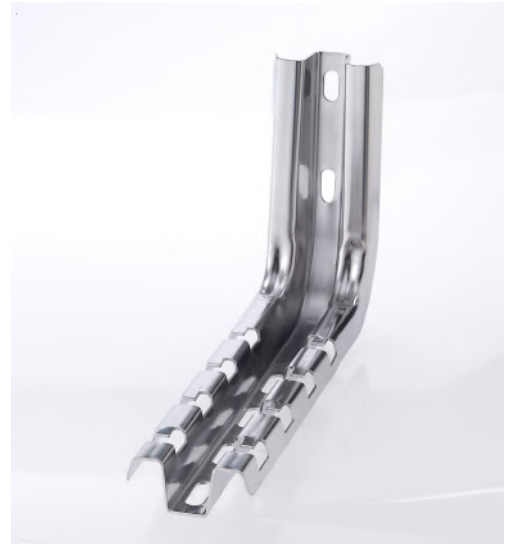
With a width up to 600 mm / height up to 100 mm

It is possible to carry a lot of amount of cable with a width of up to 1000 mm.

Wiremesh Trays can be installed quickly. It provides economic and easy working opportunities.

Ergonomic operation in every assembly area with its suitable design for all cable carrying systems.

info@ckcabletray.com
+90 542 123 35 75



/ Wiremesh Cable Tray Carrier / U Type Carriers

PRODUCT CODE	HEIGHT	WIDTH	THICKNESS \pm % 10	WEIGHT (KG/PCS)
WMS 060 P	100	60	2,0	0,135
WMS 100 P	100	110	2,0	0,177
WMS 150 P	100	160	2,0	0,219
WMS 200 P	100	210	2,0	0,261
WMS 250 P	100	260	2,0	0,303
WMS 300 P	100	310	2,0	0,345
WMS 060 H	100	60	2,0	0,140
WMS 100 H	100	110	2,0	0,184
WMS 150 H	100	160	2,0	0,228
WMS 200 H	100	210	2,0	0,272
WMS 250 H	100	260	2,0	0,315

(EG / HDG / SS304 / SS316) C Type Wall Support

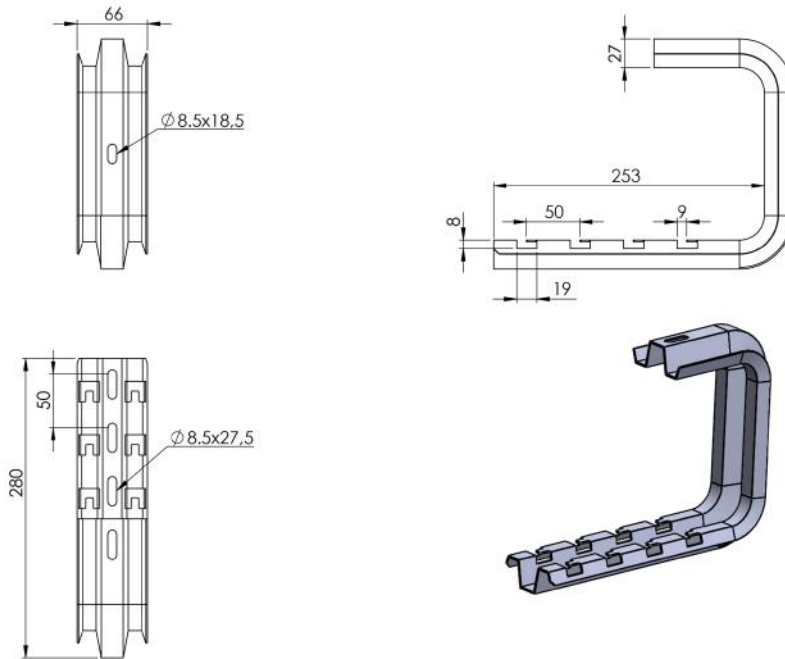
With a width up to 600 mm / height up to 100 mm

It is possible to carry a lot of amount of cable with a width of up to 1000 mm.

Wiremesh Trays can be installed quickly. It provides economic and easy working opportunities.

Ergonomic operation in every assembly area with its suitable design for all cable carrying systems.

info@ckcabletray.com
+90 542 123 35 75



/ Wiremesh Cable Tray Carrier / U Type Carriers

PRODUCT CODE	HEIGHT	WIDTH	THICKNESS ± % 10	WEIGHT (KG/PCS)
WMS 060 P	100	60	2,0	0,135
WMS 100 P	100	110	2,0	0,177
WMS 150 P	100	160	2,0	0,219
WMS 200 P	100	210	2,0	0,261
WMS 250 P	100	260	2,0	0,303
WMS 300 P	100	310	2,0	0,345
WMS 060 H	100	60	2,0	0,140
WMS 100 H	100	110	2,0	0,184
WMS 150 H	100	160	2,0	0,228
WMS 200 H	100	210	2,0	0,272
WMS 250 H	100	260	2,0	0,315

(EG / HDG / SS304 / SS316)

Omega Floor Mounting

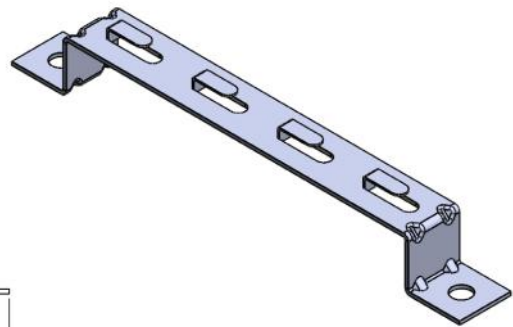
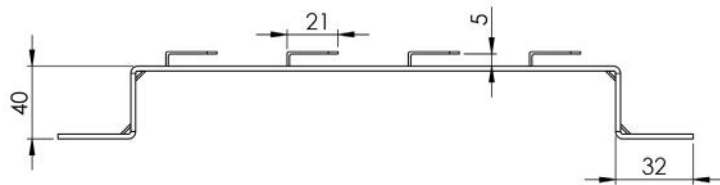
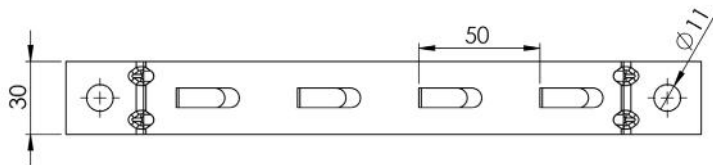
With a width up to 600 mm / height up to 100 mm

It is possible to carry a lot of amount of cable with a width of up to 1000 mm.

Wiremesh Trays can be installed quickly. It provides economic and easy working opportunities.

Ergonomic operation in every assembly area with its suitable design for all cable carrying systems.

info@ckcabletray.com
+90 542 123 35 75

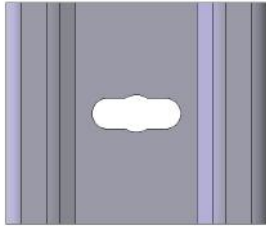


/ Wiremesh Cable Tray Carrier / Omega Floor Mounting

PRODUCT CODE	HEIGHT	WIDTH	THICKNESS ± % 10	WEIGHT (KG/PCS)
WMS 060 P	100	60	2,0	0,135
WMS 100 P	100	110	2,0	0,177
WMS 150 P	100	160	2,0	0,219
WMS 200 P	100	210	2,0	0,261
WMS 250 P	100	260	2,0	0,303
WMS 300 P	100	310	2,0	0,345
WMS 060 H	100	60	2,0	0,140
WMS 100 H	100	110	2,0	0,184
WMS 150 H	100	160	2,0	0,228
WMS 200 H	100	210	2,0	0,272
WMS 250 H	100	260	2,0	0,315

(EG / HDG / SS304 / SS316) Floor Mounting & Supporter With Rod

CK-KKTB



(EG / HDG / SS304 / SS316) Omega Floor Mounting

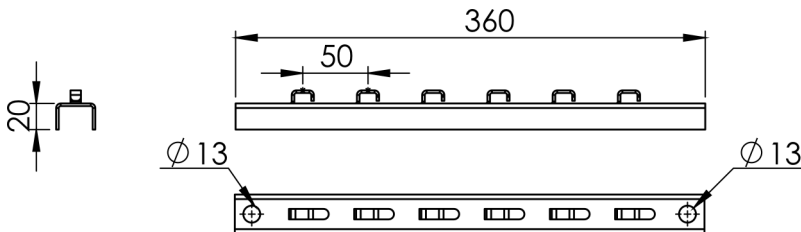
With a width up to 600 mm / height up to 100 mm

It is possible to carry a lot of amount of cable with a width of up to 1000 mm.

Wiremesh Trays can be installed quickly. It provides economic and easy working opportunities.

Ergonomic operation in every assembly area with its suitable design for all cable carrying systems.

info@ckcabletray.com
+90 542 123 35 75



/ Wiremesh Cable Tray Carrier / **Floor Mounting & Supporter With Rod**

PRODUCT CODE	HEIGHT	WIDTH	THICKNESS ± % 10	WEIGHT (KG/PCS)
WMS 060 P	100	60	2,0	0,135
WMS 100 P	100	110	2,0	0,177
WMS 150 P	100	160	2,0	0,219
WMS 200 P	100	210	2,0	0,261
WMS 250 P	100	260	2,0	0,303
WMS 300 P	100	310	2,0	0,345
WMS 060 H	100	60	2,0	0,140
WMS 100 H	100	110	2,0	0,184
WMS 150 H	100	160	2,0	0,228
WMS 200 H	100	210	2,0	0,272
WMS 250 H	100	260	2,0	0,315

(EG / HDG / SS304 / SS316)

Wire Mesh Couplers

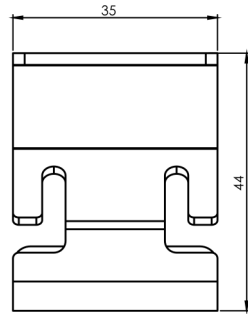
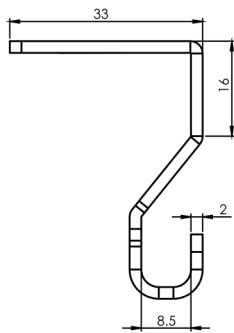
With a width up to 600 mm / height up to 100 mm

It is possible to carry a lot of amount of cable with a width of up to 1000 mm.

Wiremesh Trays can be installed quickly. It provides economic and easy working opportunities.

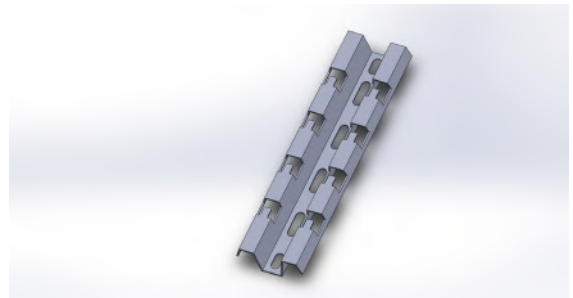
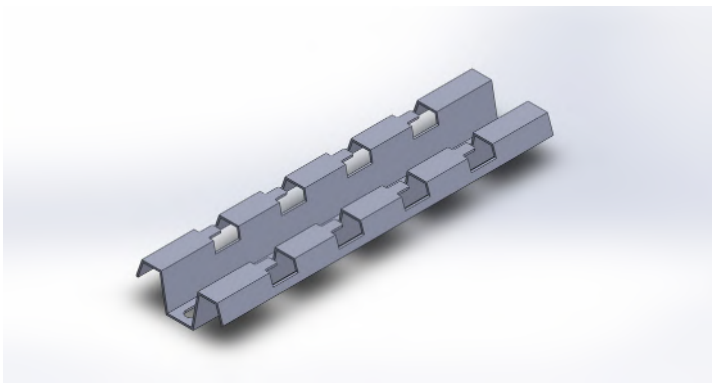
Ergonomic operation in every assembly area with its suitable design for all cable carrying systems.

info@ckcabletray.com
+90 542 123 35 75



CK-TKC

(EG / HDG / SS304 / SS316) Cable Tray Claw Carrier



/ Wiremesh Cable Tray Carrier / U Type Carriers

PRODUCT CODE	HEIGHT	WIDTH	THICKNESS \pm % 10
WMS 060 P	100	60	2,0
WMS 100 P	100	110	2,0
WMS 150 P	100	160	2,0
WMS 200 P	100	210	2,0

(EG / HDG / SS304 / SS316)

Cable Transition Part

With a width up to 600 mm / height up to 100 mm

It is possible to carry a lot of amount of cable with a width of up to 1000 mm.

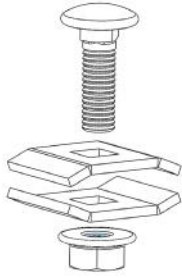
Wiremesh Trays can be installed quickly. It provides economic and easy working opportunities.

Ergonomic operation in every assembly area with its suitable design for all cable carrying systems.

info@ckcabletray.com
+90 542 123 35 75



CK-KKGS



(EG / HDG / SS304 / SS316)

Wiremesh Cable Tray Connector

Hızlı Montaj / Farklı Yüzey Kaplama Seçeneği / Ekonomik Seri

Tel kablo kanallarının hızlı bir şekilde montaj yerinde birbirine bağlanabilmesi için uygun bir üründür.

Yüzey kaplama seçeneği mevcuttur. Kullanım yerine uygun olarak PG yada EG olarak seçim yapılabilir.

Tel kablo taşıma sistemleri için uygun tasarımı ile her montaj alanında ergonomik ve ekonomik çalışma imkanı sağlar.

/ Cable Tray / Wiremesh Cable Trays Couplers

PRODUCT CODE	HEIGHT	WIDTH	THICKNESS ± % 10	WEIGHT (KG/PCS)
WMC 1 P	6	20	2,0	0,025

(EG / HDG / SS304 / SS316)

Wire Mesh Connector

With a width up to 600 mm / height up to 100 mm

It is possible to carry a lot of amount of cable with a width of up to 1000 mm.

Wiremesh Trays can be installed quickly. It provides economic and easy working opportunities.

Ergonomic operation in every assembly area with its suitable design for all cable carrying systems.

CK-KKIB



CK Kablo Taşıma
Sistemleri
CK Cable Tray
Systems

(EG / HDG / SS304 / SS316)

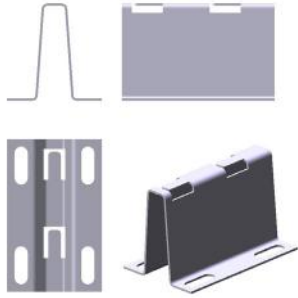
Floor Mounting Support

With a width up to 600 mm / height up to 100 mm

It is possible to carry a lot of amount of cable with a width of up to 1000 mm.

Wiremesh Trays can be installed quickly. It provides economic and easy working opportunities.

Ergonomic operation in every assembly area with its suitable design for all cable carrying systems.



CK-KKYB

(EG / HDG / SS304 / SS316)

Turn Lock

With a width up to 600 mm / height up to 100 mm

It is possible to carry a lot of amount of cable with a width of up to 1000 mm.

Wiremesh Trays can be installed quickly. It provides economic and easy working opportunities.

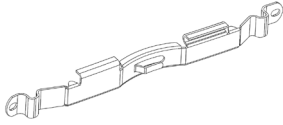
Ergonomic operation in every assembly area with its suitable design for all cable carrying systems.



CK-KKDK-M

CK-KKDK-S





(PG/HDG) Wiremesh Cable Tray Cou-

With a width up to 600 mm / height up to 100 mm

It is possible to carry a lot of amount of cable with a width of up to 1000 mm.

Wiremesh Trays can be installed quickly. It provides economic and easy working opportunities.

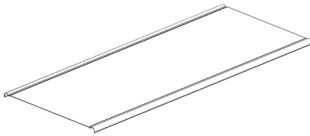
Ergonomic operation in every assembly area with its suitable design for all cable carrying systems.

info@ckcabletray.com
+90 542 123 35 75

/ Cable Tray / EG H100 Wiremesh Cable Trays Couplers

PRODUCT CODE	HEIGHT	WIDTH	THICKNESS ± % 10	EG WEIGHT (KG/PCS)
WMC 2 P	3	225	1,5	0,160

(PG / HDG) Wiremesh Cable Tray Covers



With a width up to 600 mm / height up to 100 mm

It is possible to carry a lot of amount of cable with a width of up to 1000 mm.

Wiremesh Trays can be installed quickly. It provides economic and easy working opportunities.

Ergonomic operation in every assembly area with its suitable design for all cable carrying systems.

info@ckcabletray.com
+90 542 123 35 75

/ Wiremesh Cable Tray / Covers

PRODUCT CODE	HEIGHT	WIDTH	THICKNESS ± % 10	WEIGHT (KG/PCS)
WMC 050 9CO P	10	60	0,9	0,502
WMC 100 9CO P	10	110	0,9	0,816
WMC 150 9CO P	10	160	0,9	1,130
WMC 200 9CO P	10	210	0,9	1,444
WMC 250 9CO P	10	260	0,9	1,758
WMC 300 9CO P	10	310	0,9	2,072
WMC 350 9CO P	10	360	0,9	2,386
WMC 400 9CO P	10	410	0,9	2,700
WMC 450 9CO P	10	460	0,9	3,014
WMC 500 9CO P	10	510	0,9	3,328
WMC 550 9CO P	10	560	0,9	3,642
WMC 600 9CO P	10	610	0,9	3,956
WMC 050 9CO H	10	60	1,0	0,538
WMC 100 9CO H	10	110	1,0	0,874
WMC 150 9CO H	10	160	1,0	1,210
WMC 200 9CO H	10	210	1,0	1,546
WMC 250 9CO H	10	260	1,0	1,881
WMC 300 9CO H	10	310	1,0	2,217
WMC 350 9CO H	10	360	1,0	2,553
WMC 400 9CO H	10	410	1,0	2,889
WMC 450 9CO H	10	460	1,0	3,225
WMC 500 9CO H	10	510	1,0	3,561
WMC 550 9CO H	10	560	1,0	3,897
WMC 600 9CO H	10	610	1,0	4,233

(EG / HDG / SS304 / SS316)

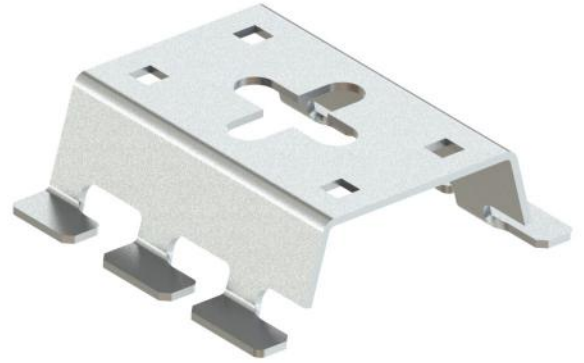
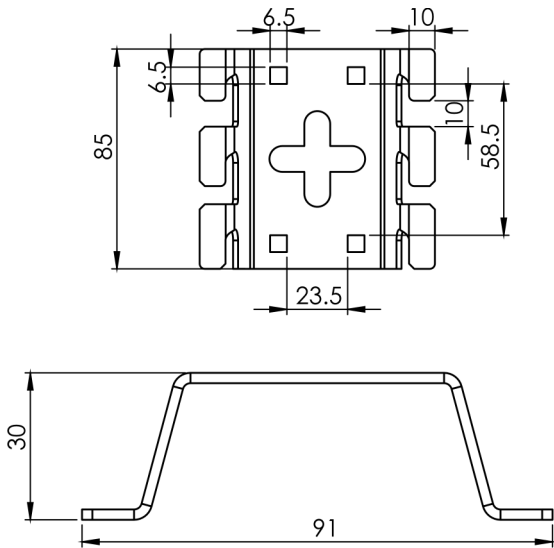
Floor Mounting Support

With a width up to 600 mm / height up to 100 mm

It is possible to carry a lot of amount of cable with a width of up to 1000 mm.

Wiremesh Trays can be installed quickly. It provides economic and easy working opportunities.

Ergonomic operation in every assembly area with its suitable design for all cable carrying systems.

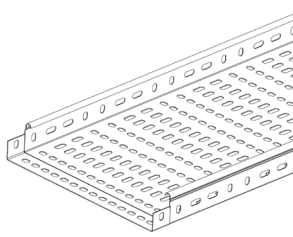





CK Cable Tray
Systems


CK Cable Tray
Systems


CK Cable Tray
Systems



(PG) H40 Snap-On Cable

Easy Connector / No Cover Clamp / No Connection Coupler

Snap-On Cable Trays can be installed quickly. It provides economic and easy working opportunities.

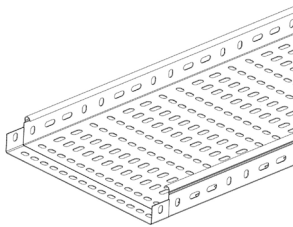
Snap-On Cable Trays Cover (cap holder, bolt, screw etc.) can be connected without the need for extra connection parts.

Ergonomic operation in every assembly area with its suitable design for all cable carrying systems.

info@ckcabletray.com
+90 542 123 35 75

/ Cable Tray / Snap - On Cable Trays

PRODUCT CODE	HEIGHT	WIDTH	THICKNESS ± % 10	WEIGHT (KG/MT)
SO4 050 7CT P	40	50	0,70	0,630
SO4 100 7CT P	40	100	0,70	0,835
SO4 160 7CT P	40	160	0,70	1,095
SO4 200 8CT P	40	200	0,80	1,480
SO4 300 9CT P	40	300	0,90	2,260
SO4 400 1CT P	40	400	1,00	3,200



(PG) H50 Snap-On Cable

Easy Connector / No Cover Clamp / No Connection Coupler

Snap-On Cable Trays can be installed quickly. It provides economic and easy working opportunities.

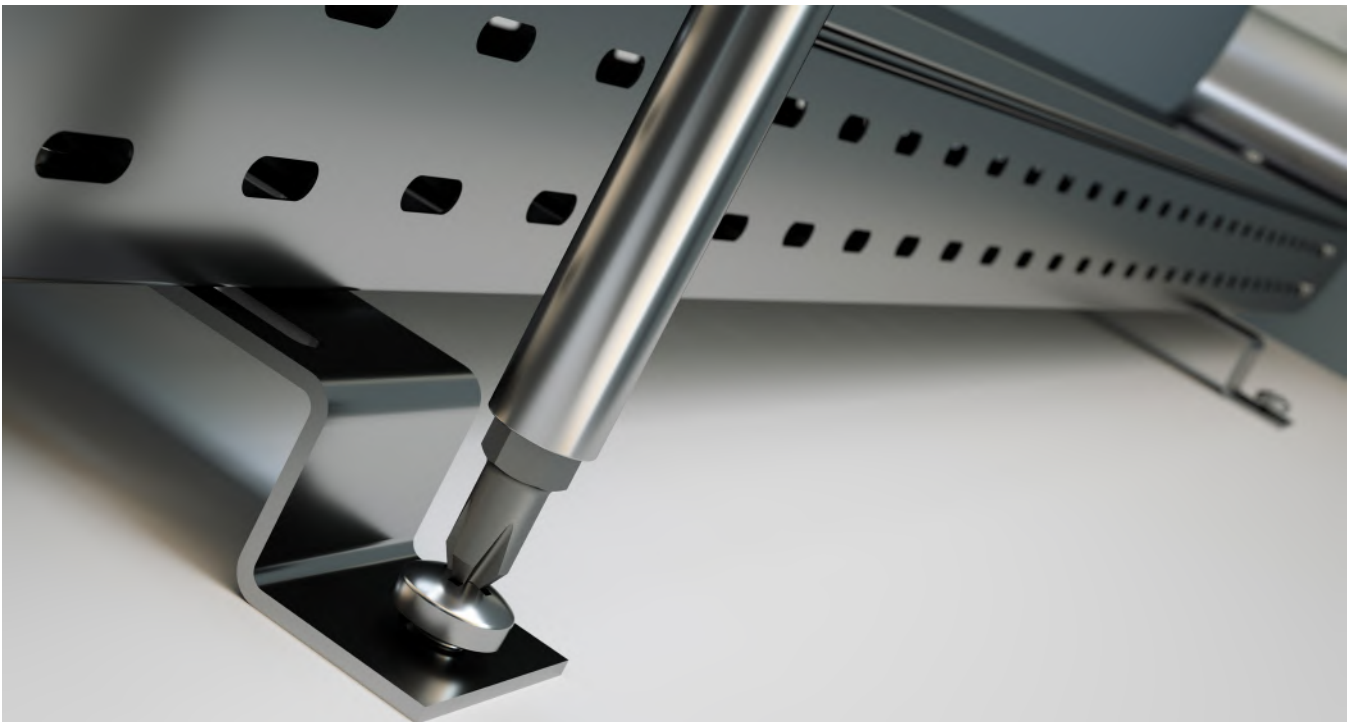
Snap-On Cable Trays Cover (cap holder, bolt, screw etc.) can be connected without the need for extra connection parts.

Ergonomic operation in every assembly area with its suitable design for all cable carrying systems.

info@ckcabletray.com
+90 542 123 35 75

/ Cable Tray / Snap - On Cable Trays

PRODUCT CODE	HEIGHT	WIDTH	THICKNESS ± % 10	WEIGHT (KG/MT)
SO5 050 7CT P	50	50	0,70	0,715
SO5 100 7CT P	50	100	0,70	0,925
SO5 160 7CT P	50	160	0,70	1,180
SO5 200 8CT P	50	200	0,80	1,580
SO5 300 9CT P	50	300	0,90	2,380



(PG) H60 Snap-On Cable

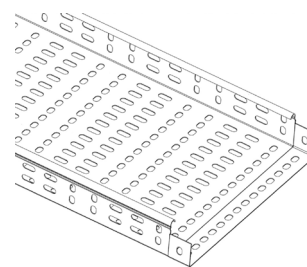
Easy Connector / No Cover Clamp / No Connection Coupler

Snap-On Cable Trays can be installed quickly. It provides economic and easy working opportunities.

Snap-On Cable Trays Cover (cap holder, bolt, screw etc.) can be connected without the need for extra connection parts.

Ergonomic operation in every assembly area with its suitable design for all cable carrying systems.

info@ckcabletray.com
+90 542 123 35 75



/ Cable Tray / Snap - On Cable Trays

PRODUCT CODE	HEIGHT	WIDTH	THICKNESS ± % 10	WEIGHT (KG/MT)
SO6 100 7CT P	60	100	0,70	1,000
SO6 150 7CT P	60	150	0,70	1,225
SO6 200 7CT P	60	200	0,80	1,680
SO6 300 9CT P	60	300	0,90	2,500

(PG) H80 Snap-On Cable

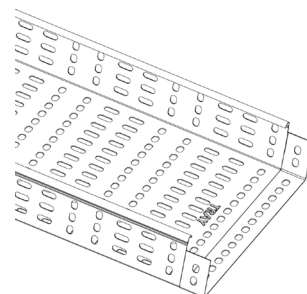
Easy Connector / No Cover Clamp / No Connection Coupler

Snap-On Cable Trays can be installed quickly. It provides economic and easy working opportunities.

Snap-On Cable Trays Cover (cap holder, bolt, screw etc.) can be connected without the need for extra connection parts.

Ergonomic operation in every assembly area with its suitable design for all cable carrying systems.

info@ckcabletray.com
+90 542 123 35 75



/ Cable Tray / Snap - On Cable Trays

PRODUCT CODE	HEIGHT	WIDTH	THICKNESS ± % 10	WEIGHT (KG/MT)
SO8 100 8CT P	80	100	0,80	1,380
SO8 150 8CT P	80	150	0,80	1,630
SO8 200 9CT P	80	200	0,90	2,150
SO8 300 1CT P	80	300	1,00	3,060

(PG) H100 Snap-On Cable Trays

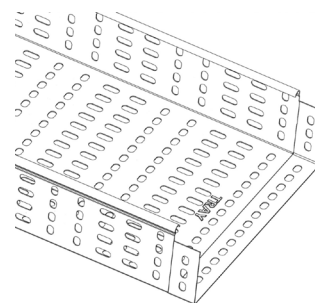
Easy Connector / No Cover Clamp / No Connection Coupler

Snap-On Cable Trays can be installed quickly. It provides economic and easy working opportunities.

Snap-On Cable Trays Cover (cap holder, bolt, screw etc.) can be connected without the need for extra connection parts.

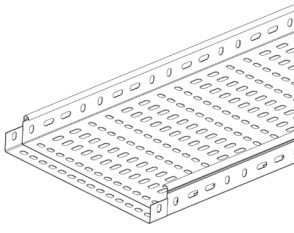
Ergonomic operation in every assembly area with its suitable design for all cable carrying systems.

info@ckcabletray.com
+90 542 123 35 75



/ Cable Tray / Snap - On Cable Trays

PRODUCT CODE	HEIGHT	WIDTH	THICKNESS ± % 10	WEIGHT (KG/MT)
SO1 100 8CT P	100	100	0,80	1,580
SO1 150 8CT P	100	150	0,80	1,830
SO1 200 9CT P	100	200	0,90	2,380
SO1 300 1CT P	100	300	1,00	3,325



(HDG) H40 Snap-On Cable Trays

Easy Connector / No Cover Clamp / No Connection Coupler

Snap-On Cable Trays can be installed quickly. It provides economic and easy working opportunities.

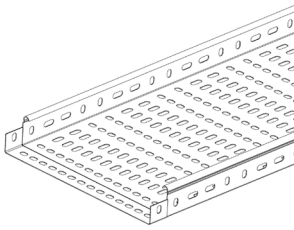
Kablo Kanal Kapağı kapak tutucu, civata, vida vb. parçalara gerek olmadan bağlantı yapılabilir.

Ergonomic operation in every assembly area with its suitable design for all cable carrying systems.

info@ckcabletray.com
+90 542 123 35 75

/ Cable Tray / Snap - On Cable Trays

PRODUCT CODE	HEIGHT	WIDTH	THICKNESS ± % 10	WEIGHT (KG/MT)
SO4 050 8CT H	40	50	0,80	0,800
SO4 100 8CT H	40	100	0,80	1,050
SO4 160 8CT H	40	160	0,80	1,380
SO4 200 9CT H	40	200	0,90	1,820
SO4 300 1CT H	40	300	1,00	2,750
SO4 400 1CT H	40	400	1,10	3,830



(HDG) H50 Snap-On Cable Trays

Easy Connector / No Cover Clamp / No Connection Coupler

Snap-On Cable Trays can be installed quickly. It provides economic and easy working opportunities.

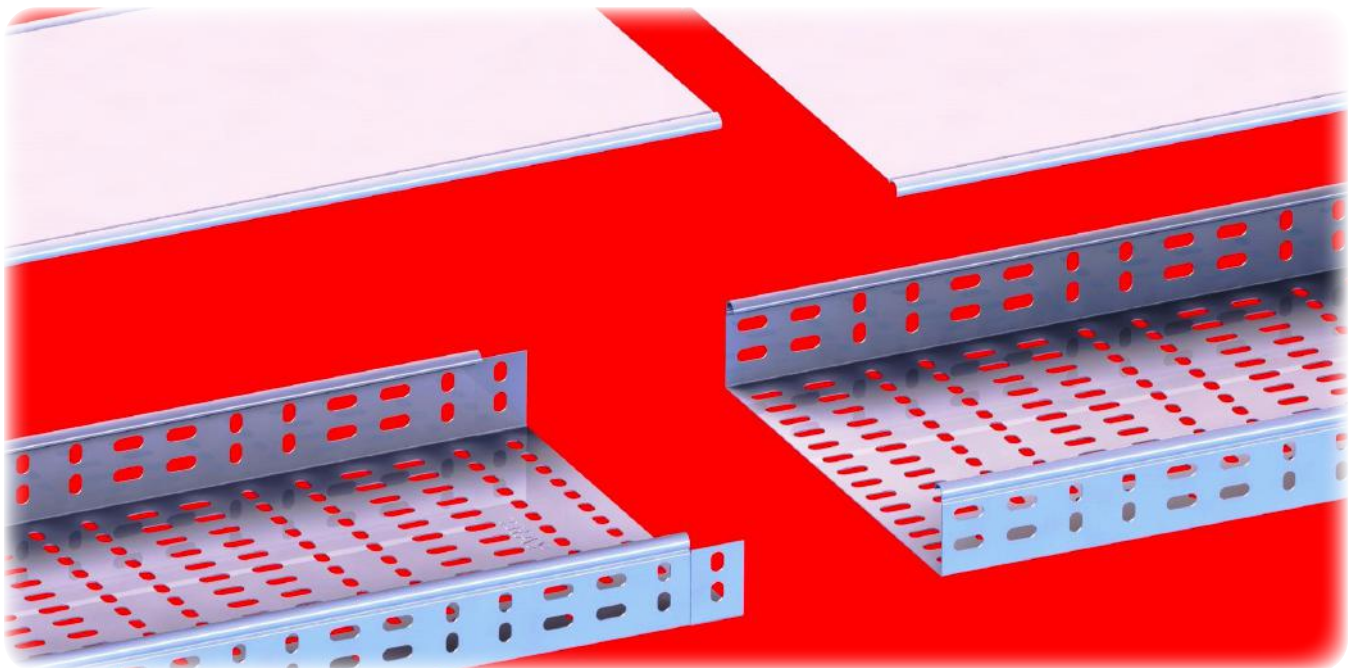
Kablo Kanal Kapağı kapak tutucu, civata, vida vb. parçalara gerek olmadan bağlantı yapılabilir.

Ergonomic operation in every assembly area with its suitable design for all cable carrying systems.

info@ckcabletray.com
+90 542 123 35 75

/ Cable Tray / Snap - On Cable Trays

PRODUCT CODE	HEIGHT	WIDTH	THICKNESS ± % 10	WEIGHT (KG/MT)
SO5 050 8CT H	50	50	0,80	0,890
SO5 100 8CT H	50	100	0,80	1,160
SO5 160 8CT H	50	160	0,80	1,490
SO5 200 9CT H	50	200	0,90	1,950
SO5 300 1CT H	50	300	1,00	2,890
SO5 400 1CT H	50	400	1,10	3,909



(HDG) H60 Snap-On Cable Trays

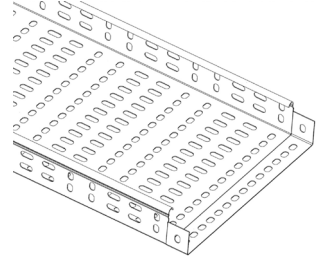
Easy Connector / No Cover Clamp / No Connection Coupler

Snap-On Cable Trays can be installed quickly. It provides economic and easy working opportunities.

Kablo Kanal Kapağı kapak tutucu, civata, vida vb. parçalara gerek olmadan bağlantı yapılabilir.

Ergonomic operation in every assembly area with its suitable design for all cable carrying systems.

info@ckcabletray.com
+90 542 123 35 75



/ Cable Tray / Snap - On Cable Trays

PRODUCT CODE	HEIGHT	WIDTH	THICKNESS ± % 10	WEIGHT (KG/MT)
SO6 100 8CT H	60	100	0,80	1,090
SO6 150 8CT H	60	150	0,80	1,325
SO6 200 9CT H	60	200	0,90	1,815
SO6 300 1CT H	60	300	1,00	2,700
SO6 400 1CT H	60	400	1,10	3,730

(HDG) H80 Snap-On Cable Trays

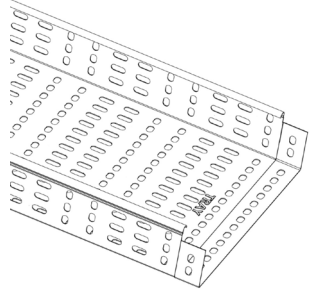
Easy Connector / No Cover Clamp / No Connection Coupler

Snap-On Cable Trays can be installed quickly. It provides economic and easy working opportunities.

Kablo Kanal Kapağı kapak tutucu, civata, vida vb. parçalara gerek olmadan bağlantı yapılabilir.

Ergonomic operation in every assembly area with its suitable design for all cable carrying systems.

info@ckcabletray.com
+90 542 123 35 75



/ Cable Tray / Snap - On Cable Trays

PRODUCT CODE	HEIGHT	WIDTH	THICKNESS ± % 10	WEIGHT (KG/MT)
SO8 100 9CT H	80	100	0,90	1,488
SO8 150 9CT H	80	150	0,90	1,760
SO8 200 1CT H	80	200	1,00	2,320
SO8 300 1CT H	80	300	1,10	3,310
SO8 400 2CT H	80	400	1,20	4,450

(HDG) H100 Snap-On Cable

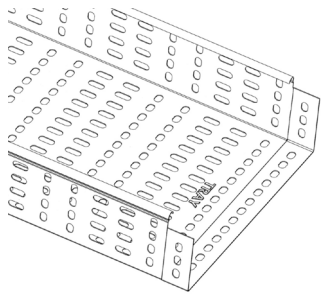
Easy Connector / No Cover Clamp / No Connection Coupler

Snap-On Cable Trays can be installed quickly. It provides economic and easy working opportunities.

Kablo Kanal Kapağı kapak tutucu, civata, vida vb. parçalara gerek olmadan bağlantı yapılabilir.

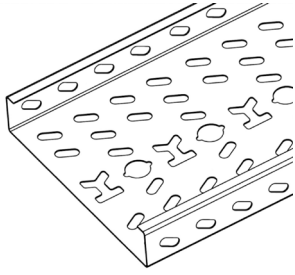
Ergonomic operation in every assembly area with its suitable design for all cable carrying systems.

info@ckcabletray.com
+90 542 123 35 75



/ Cable Tray / Snap - On Cable Trays

PRODUCT CODE	HEIGHT	WIDTH	THICKNESS ± % 10	WEIGHT (KG/MT)
SO1 100 9CT H	100	100	0,90	1,705
SO1 150 9CT H	100	150	0,90	1,980
SO1 200 1CT H	100	200	1,00	2,570
SO1 300 1CT H	100	300	1,10	3,590
SO1 400 2CT H	100	400	1,20	4,765



(PG) H40 Heavy Duty Cable Trays

With a width up to 1000mm / height up to 200mm.

It is possible to carry a lot of amount of cable with a width of up to 1000 mm.

Geniş kalınlık seçeneği ile aynı genişlikte esnek olarak kablo çapları seçilebilir.

Ergonomic operation in every assembly area with its suitable design for all cable carrying systems.

info@ckcabletray.com
+90 542 123 35 75

/ Cable Tray / PG H40 Heavy Duty Cable Trays

PRODUCT CODE	HEIGHT	WIDTH	THICKNESS \pm % 10	WEIGHT (KG/MT)
HD4 050 8CT P	40	50	0,80	0,696
HD4 100 1CT P	40	100	1,00	1,206
HD4 160 1CT P	40	160	1,00	1,579
HD4 200 1CT P	40	200	1,00	1,828
HD4 220 2CT P	40	220	1,20	2,386
HD4 260 2CT P	40	260	1,20	2,690
HD4 300 5CT P	40	300	1,50	3,810
HD4 400 5CT P	40	400	1,50	4,778
HD4 460 5CT P	40	460	1,50	5,358
HD4 500 0CT P	40	500	2,00	7,796

(HDG) H40 Heavy Duty Cable Trays

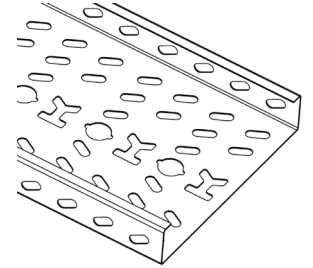
With a width up to 1000mm / height up to 200mm.

It is possible to carry a lot of amount of cable with a width of up to 1000 mm.

Geniş kalınlık seçeneği ile aynı genişlikte esnek olarak kablo çapları seçilebilir.

Ergonomic operation in every assembly area with its suitable design for all cable carrying systems.

info@ckcabletray.com
+90 542 123 35 75



/ Cable Tray / HDG H40 Heavy Duty Cable Trays

PRODUCT CODE	HEIGHT	WIDTH	THICKNESS \pm % 10	WEIGHT (KG/MT)
HD4 050 1CT H	40	50	1,00	0,859
HD4 100 2CT H	40	100	1,20	1,447
HD4 160 2CT H	40	160	1,20	1,895
HD4 200 2CT H	40	200	1,20	2,193
HD4 220 5CT H	40	220	1,50	3,045
HD4 260 5CT H	40	260	1,50	3,433
HD4 300 5CT H	40	300	1,50	3,821
HD4 400 0CT H	40	400	2,00	6,634
HD4 460 0CT H	40	460	2,00	7,440
HD4 500 0CT H	40	500	2,00	7,977

(PG) H50 Heavy Duty Cable Trays

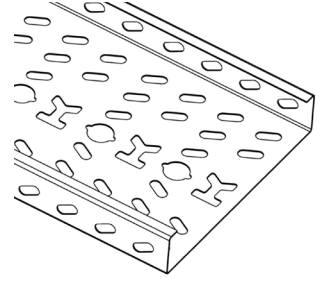
With a width up to 1000mm / height up to 200mm.

It is possible to carry a lot of amount of cable with a width of up to 1000 mm.

Geniş kalınlık seçeneği ile aynı genişlikte esnek olarak kablo çapları seçilebilir.

Ergonomic operation in every assembly area with its suitable design for all cable carrying systems.

info@ckcabletray.com
+90 542 123 35 75



/ Cable Tray / PG H50 Heavy Duty Cable Trays

PRODUCT CODE	HEIGHT	WIDTH	THICKNESS \pm % 10	WEIGHT (KG/MT)
HD5 050 8CT P	50	50	0,80	0,793
HD5 100 1CT P	50	100	1,00	1,330
HD5 160 1CT P	50	160	1,00	1,704
HD5 200 1CT P	50	200	1,00	1,952
HD5 220 2CT P	50	220	1,20	2,538
HD5 260 2CT P	50	260	1,20	2,842
HD5 300 5CT P	50	300	1,50	4,004
HD5 400 5CT P	50	400	1,50	4,971
HD5 460 5CT P	50	460	1,50	5,551
HD5 500 0CT P	50	500	2,00	8,059

(HDG) H50 Heavy Duty Cable Trays

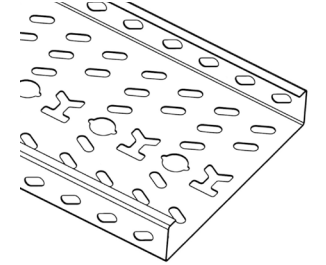
With a width up to 1000mm / height up to 200mm.

It is possible to carry a lot of amount of cable with a width of up to 1000 mm.

Geniş kalınlık seçeneği ile aynı genişlikte esnek olarak kablo çapları seçilebilir.

Ergonomic operation in every assembly area with its suitable design for all cable carrying systems.

info@ckcabletray.com
+90 542 123 35 75

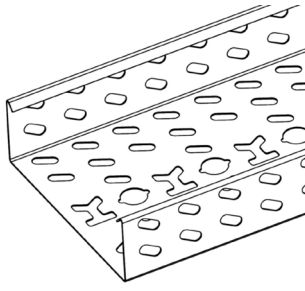


/ Cable Tray / HDG H50 Heavy Duty Cable Trays

PRODUCT CODE	HEIGHT	WIDTH	THICKNESS \pm % 10	WEIGHT (KG/MT)
HD5 050 1CT H	50	50	1,00	0,979
HD5 100 2CT H	50	100	1,20	1,597
HD5 160 2CT H	50	160	1,20	2,044
HD5 200 2CT H	50	200	1,20	2,343
HD5 220 5CT H	50	220	1,50	3,239
HD5 260 5CT H	50	260	1,50	3,627
HD5 300 5CT H	50	300	1,50	4,015
HD5 400 0CT H	50	400	2,00	6,903
HD5 460 0CT H	50	460	2,00	7,708

TK506012-HDG
TK506015-HDG
TK506020-HDG

TK506010-HDG



(PG) H60 Heavy Duty Cable Trays

With a width up to 1000mm / height up to 200mm.

It is possible to carry a lot of amount of cable with a width of up to 1000 mm.

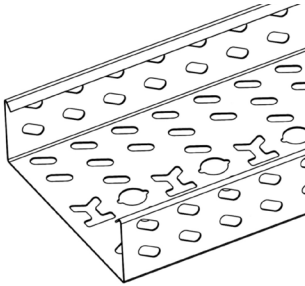
Geniş kalınlık seçeneği ile aynı genişlikte esnek olarak kablo çapları seçilebilir.

Ergonomic operation in every assembly area with its suitable design for all cable carrying systems.

info@ckcabletray.com
+90 542 123 35 75

/ Cable Tray / PG H60 Heavy Duty Cable Trays

PRODUCT CODE	HEIGHT	WIDTH	THICKNESS \pm % 10	WEIGHT (KG/MT)
HD6 100 8CT P	60	100	0,80	1,132
HD6 160 1CT P	60	160	1,00	1,828
HD6 200 1CT P	60	200	1,00	2,077
HD6 220 2CT P	60	220	1,20	2,690
HD6 260 2CT P	60	260	1,20	2,994
HD6 300 5CT P	60	300	1,50	4,197
HD6 400 5CT P	60	400	1,50	5,164
HD6 460 0CT P	60	460	2,00	7,796
HD6 500 0CT P	60	500	2,00	8,321



(HDG) H60 Heavy Duty Cable Trays

With a width up to 1000mm / height up to 200mm.

It is possible to carry a lot of amount of cable with a width of up to 1000 mm.

Geniş kalınlık seçeneği ile aynı genişlikte esnek olarak kablo çapları seçilebilir.

Ergonomic operation in every assembly area with its suitable design for all cable carrying systems.

info@ckcabletray.com
+90 542 123 35 75

/ Cable Tray / HDG H60 Heavy Duty Cable Trays

PRODUCT CODE	HEIGHT	WIDTH	THICKNESS \pm % 10	WEIGHT (KG/MT)
HD6 100 1CT H	60	100	1,00	1,397
HD6 160 2CT H	60	160	1,20	2,193
HD6 200 2CT H	60	200	1,20	2,492
HD6 220 2CT H	60	220	1,20	2,641
HD6 260 2CT H	60	260	1,20	2,939
HD6 300 5CT H	60	300	1,50	4,209
HD6 400 5CT H	60	400	1,50	5,179
HD6 460 0CT H	60	460	2,00	7,977
HD6 500 0CT H	60	500	2,00	8,514

(PG) H80 Heavy Duty Cable Trays

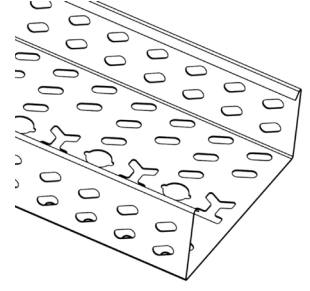
With a width up to 1000mm / height up to 200mm.

It is possible to carry a lot of amount of cable with a width of up to 1000 mm.

Geniş kalınlık seçeneği ile aynı genişlikte esnek olarak kablo çapları seçilebilir.

Ergonomic operation in every assembly area with its suitable design for all cable carrying systems.

info@ckcabletray.com
+90 542 123 35 75



/ Cable Tray / PG H80 Heavy Duty Cable Trays

PRODUCT CODE	HEIGHT	WIDTH	THICKNESS ± % 10	WEIGHT (KG/MT)
HD8 100 8CT P	80	100	0,80	1,325
HD8 160 1CT P	80	160	1,00	2,077
HD8 200 1CT P	80	200	1,00	2,325
HD8 220 2CT P	80	220	1,20	2,994
HD8 260 2CT P	80	260	1,20	3,298
HD8 300 5CT P	80	300	1,50	4,584
HD8 400 5CT P	80	400	1,50	5,551
HD8 460 0CT P	80	460	2,00	8,321
HD8 500 0CT P	80	500	2,00	8,846

(HDG) H80 Heavy Duty Cable Trays

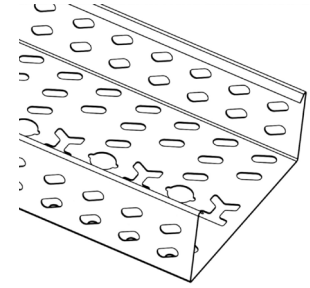
With a width up to 1000mm / height up to 200mm.

It is possible to carry a lot of amount of cable with a width of up to 1000 mm.

Geniş kalınlık seçeneği ile aynı genişlikte esnek olarak kablo çapları seçilebilir.

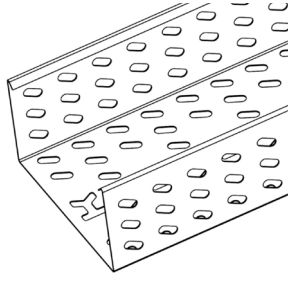
Ergonomic operation in every assembly area with its suitable design for all cable carrying systems.

info@ckcabletray.com
+90 542 123 35 75



/ Cable Tray / HDG H80 Heavy Duty Cable Trays

PRODUCT CODE	HEIGHT	WIDTH	THICKNESS ± % 10	WEIGHT (KG/MT)
HD8 100 1CT H	80	100	1,00	1,635
HD8 160 2CT H	80	160	1,20	2,492
HD8 200 2CT H	80	200	1,20	2,790
HD8 220 2CT H	80	220	1,20	2,939
HD8 260 2CT H	80	260	1,20	3,238
HD8 300 5CT H	80	300	1,50	4,597
HD8 400 5CT H	80	400	1,50	5,567
HD8 460 0CT H	80	460	2,00	8,514
HD8 500 0CT H	80	500	2,00	9,051



(PG) H100 Heavy Duty Cable Trays

With a width up to 1000mm / height up to 200mm.

It is possible to carry a lot of amount of cable with a width of up to 1000 mm.

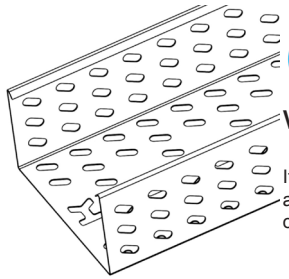
Geniş kalınlık seçeneği ile aynı genişlikte esnek olarak kablo çapları seçilebilir.

Ergonomic operation in every assembly area with its suitable design for all cable carrying systems.

info@ckcabletray.com
+90 542 123 35 75

/ Cable Tray / PG H100 Heavy Duty Cable Trays

PRODUCT CODE	HEIGHT	WIDTH	THICKNESS \pm % 10	WEIGHT (KG/MT)
HD1 100 8CT P	100	100	0,80	1,518
HD1 160 1CT P	100	160	1,00	2,325
HD1 200 1CT P	100	200	1,00	2,574
HD1 220 2CT P	100	220	1,20	3,298
HD1 260 2CT P	100	260	1,20	3,602
HD1 300 5CT P	100	300	1,50	4,971
HD1 400 5CT P	100	400	1,50	5,938
HD1 460 0CT P	100	460	2,00	8,846
HD1 500 0CT P	100	500	2,00	9,371



(HDG) H100 Heavy Duty Cable Trays

With a width up to 1000mm / height up to 200mm.

It is possible to carry a lot of amount of cable with a width of up to 1000 mm.

Geniş kalınlık seçeneği ile aynı genişlikte esnek olarak kablo çapları seçilebilir.

Ergonomic operation in every assembly area with its suitable design for all cable carrying systems.

info@ckcabletray.com
+90 542 123 35 75

/ Cable Tray / HDG H100 Heavy Duty Cable Trays

PRODUCT CODE	HEIGHT	WIDTH	THICKNESS \pm % 10	WEIGHT (KG/MT)
HD1 100 1CT H	100	100	1,00	1,874
HD1 160 2CT H	100	160	1,20	2,790
HD1 200 2CT H	100	200	1,20	3,089
HD1 220 2CT H	100	220	1,20	3,238
HD1 260 2CT H	100	260	1,20	3,536
HD1 300 5CT H	100	300	1,50	4,985
HD1 400 5CT H	100	400	1,50	5,955
HD1 460 0CT H	100	460	2,00	9,051
HD1 500 0CT H	100	500	2,00	9,588

(H40/50/60/80/100 PG / H.D.G./SS304)

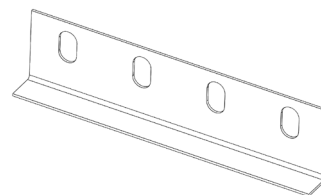
Connection Parts

With a width up to 1000 mm / height up to 200 mm.

This product is used by fixing it to the Cable Tray with M8x15 Bolt / Nut.

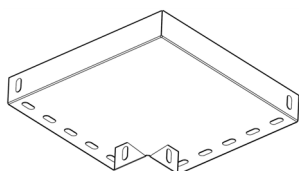
Ergonomic operation in every assembly area with its suitable design for all cable carrying systems.

info@ckcabletray.com
+90 542 123 35 75



/ H50 Connection Parts

PRODUCT CODE	HEIGHT	WIDTH	THICKNESS ± % 10	WEIGHT (KG/PCS)
CLC5 140 12 P	40/50/60/80/100	140	1,2	0,069
CLC5 210 12 P	40/50/60/80/100	210	1,2	0,103
CLC5 140 15 H	40/50/60/80/100	140	1,5	0,092
CLC5 210 15 H	40/50/60/80/100	210	1,5	0,138



(P.G. / HDG / SS304) H40/50/60/80/100 Heavy Duty Cable Tray 90° Bends

With a width up to 1000 mm / height up to 200 mm.

It is possible to carry a lot of amount of cable with a width of up to 1000 mm.

Ergonomic operation in every assembly area with its suitable design for all cable carrying systems.

info@ckcabletray.com
+90 542 123 35 75

/ Cable Tray / PG H50 Heavy Duty Cable Tray 90° Bends

PRODUCT CODE	HEIGHT	WIDTH	THICKNESS ± % 10	WEIGHT (KG/PCS)
HD5 050 LB P	40/50/60/80/100	50	0,80	0,162
HD5 100 LB P	40/50/60/80/100	100	1,00	0,345
HD5 160 LB P	40/50/60/80/100	160	1,00	0,564
HD5 200 LB P	40/50/60/80/100	200	1,00	0,740
HD5 220 LB P	40/50/60/80/100	220	1,20	1,004
HD5 260 LB P	40/50/60/80/100	260	1,20	1,258
HD5 300 LB P	40/50/60/80/100	300	1,20	1,541
HD5 400 LB P	40/50/60/80/100	400	1,50	2,967
HD5 460 LB P	40/50/60/80/100	460	1,50	3,698
HD5 500 LB P	40/50/60/80/100	500	2,00	5,641
HD5 600 LB P	40/50/60/80/100	600	2,00	7,625

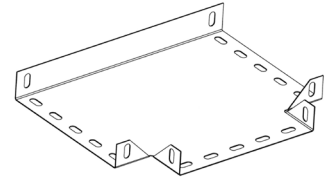
(P.G. / HDG) H40/50/60/80/100 Heavy Duty Cable Tray Tee Bends

With a width up to 1000 mm / height up to 200 mm.

It is possible to carry a lot of amount of cable with a width of up to 1000 mm.

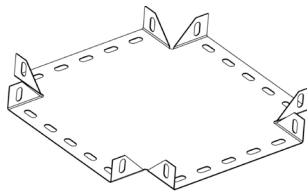
Ergonomic operation in every assembly area with its suitable design for all cable carrying systems.

info@ckcabletray.com
+90 542 123 35 75



/ Cable Tray / PG H50 Heavy Duty Cable Tray Tee Bends

PRODUCT CODE	HEIGHT	WIDTH	THICKNESS ± % 10	WEIGHT (KG/PCS)
HD5 050 TB P	40/50/60/80/100	50	0,80	0,177
HD5 100 TB P	40/50/60/80/100	100	1,00	0,369
HD5 160 TB P	40/50/60/80/100	160	1,00	0,595
HD5 200 TB P	40/50/60/80/100	200	1,00	0,775
HD5 220 TB P	40/50/60/80/100	220	1,20	1,049
HD5 260 TB P	40/50/60/80/100	260	1,20	1,309
HD5 300 TB P	40/50/60/80/100	300	1,20	1,597
HD5 400 TB P	40/50/60/80/100	400	1,50	3,053
HD5 460 TB P	40/50/60/80/100	460	1,50	3,795
HD5 500 TB P	40/50/60/80/100	500	2,00	5,779



(P.G. / HDG) H40/50/60/80/100 Heavy Duty Cable Tray Four Way Bends

With a width up to 1000 mm / height up to 200 mm.

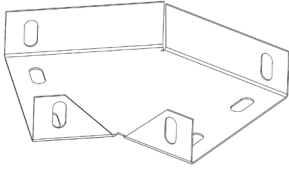
It is possible to carry a lot of amount of cable with a width of up to 1000 mm.

Ergonomic operation in every assembly area with its suitable design for all cable carrying systems.

info@ckcabletray.com
+90 542 123 35 75

/ Cable Tray / PG H50 Heavy Duty Cable Tray Four Way Bends

PRODUCT CODE	HEIGHT	WIDTH	THICKNESS ± % 10	WEIGHT (KG/PCS)
HD5 050 FB P	40/50/60/80/100	50	0,80	0,193
HD5 100 FB P	40/50/60/80/100	100	1,00	0,395
HD5 160 FB P	40/50/60/80/100	160	1,00	0,627
HD5 200 FB P	40/50/60/80/100	200	1,00	0,812
HD5 220 FB P	40/50/60/80/100	220	1,20	1,096
HD5 260 FB P	40/50/60/80/100	260	1,20	1,361
HD5 300 FB P	40/50/60/80/100	300	1,20	1,655
HD5 400 FB P	40/50/60/80/100	400	1,50	3,142
HD5 460 FB P	40/50/60/80/100	460	1,50	3,894
HD5 500 FB P	40/50/60/80/100	500	2,00	5,920



(P.G. / HDG) H40/50/60/80/100 Heavy Duty Cable Tray 45° Bends

With a width up to 1000 mm / height up to 200 mm.

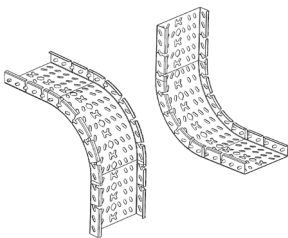
It is possible to carry a lot of amount of cable with a width of up to 1000 mm.

Ergonomic operation in every assembly area with its suitable design for all cable carrying systems.

info@ckcabletray.com
+90 542 123 35 75

/ Cable Tray / PG H50 Heavy Duty Cable Tray 45° Bends

PRODUCT CODE	HEIGHT	WIDTH	THICKNESS ± % 10	WEIGHT (KG/PCS)
HD5 050 4B P	40/50/60/80/100	50	0,80	0,126
HD5 100 4B P	40/50/60/80/100	100	1,00	0,282
HD5 160 4B P	40/50/60/80/100	160	1,00	0,479
HD5 200 4B P	40/50/60/80/100	200	1,00	0,617
HD5 220 4B P	40/50/60/80/100	220	1,20	0,832
HD5 260 4B P	40/50/60/80/100	260	1,20	1,092
HD5 300 4B P	40/50/60/80/100	300	1,20	1,300
HD5 400 4B P	40/50/60/80/100	400	1,50	2,519
HD5 460 4B P	40/50/60/80/100	460	1,50	3,124
HD5 500 4B P	40/50/60/80/100	500	2,00	4,810



(P.G. / HDG) H40/50/60/80/100 Inside / Outside 90° Bends

With a width up to 1000 mm / height up to 200 mm.

It is possible to carry a lot of amount of cable with a width of up to 1000 mm.

Ergonomic operation in every assembly area with its suitable design for all cable carrying systems.

info@ckcabletray.com
+90 542 123 35 75

/ Cable Tray / PG H50 Inside / Outside 90° Bends (Adjustable)

PRODUCT CODE	HEIGHT	WIDTH	THICKNESS ± % 10	WEIGHT (KG/PCS)
HD5 050 IO P	40/50/60/80/100	50	1,00	0,714
HD5 100 IO P	40/50/60/80/100	100	1,00	0,932
HD5 160 IO P	40/50/60/80/100	160	1,00	1,193
HD5 200 IO P	40/50/60/80/100	200	1,20	1,672
HD5 220 IO P	40/50/60/80/100	220	1,20	1,778
HD5 260 IO P	40/50/60/80/100	260	1,20	1,991
HD5 300 IO P	40/50/60/80/100	300	1,20	2,204
HD5 400 IO P	40/50/60/80/100	400	1,50	3,483
HD5 460 IO P	40/50/60/80/100	450	1,50	3,821
HD5 500 IO P	40/50/60/80/100	500	2,00	5,646

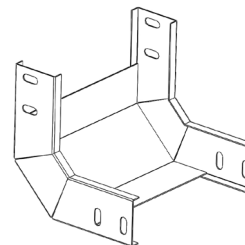
(P.G. / HDG) H40/50/60/80/100 Inside 90° Bends (Fixed)

With a width up to 1000 mm / height up to 200 mm.

It is possible to carry a lot of amount of cable with a width of up to 1000 mm.

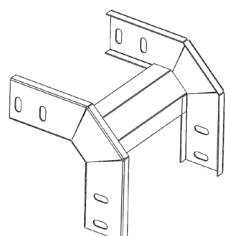
Ergonomic operation in every assembly area with its suitable design for all cable carrying systems.

info@ckcabletray.com
+90 542 123 35 75



/ Cable Tray / PG H50 Inside 90° Bends (Fixed)

PRODUCT CODE	HEIGHT	WIDTH	THICKNESS ± % 10	WEIGHT (KG/PCS)
HD5 050 IV P	40/50/60/80/100	50	1,20	0,398
HD5 100 IV P	40/50/60/80/100	100	1,20	0,452
HD5 160 IV P	40/50/60/80/100	160	1,20	0,516
HD5 200 IV P	40/50/60/80/100	200	1,20	0,559
HD5 220 IV P	40/50/60/80/100	220	1,20	0,581
HD5 260 IV P	40/50/60/80/100	260	1,20	0,624
HD5 300 IV P	40/50/60/80/100	300	1,20	0,667
HD5 400 IV P	40/50/60/80/100	400	1,50	0,968
HD5 460 IV P	40/50/60/80/100	450	1,50	1,035
HD5 500 IV P	40/50/60/80/100	500	2,00	1,469



(P.G. / HDG) H40/50/60/80/100 Outside Bends (Fixed)

With a width up to 1000 mm / height up to 200 mm.

It is possible to carry a lot of amount of cable with a width of up to 1000 mm.

Ergonomic operation in every assembly area with its suitable design for all cable carrying systems.

info@ckcabletray.com
+90 542 123 35 75

/ Cable Tray / PG H50 Outside 90° Bends (Fixed)

PRODUCT CODE	HEIGHT	WIDTH	THICKNESS ± % 10	WEIGHT (KG/PCS)
HD5 050 OV P	40/50/60/80/100	50	1,20	0,380
HD5 100 OV P	40/50/60/80/100	100	1,20	0,416
HD5 160 OV P	40/50/60/80/100	160	1,20	0,459
HD5 200 OV P	40/50/60/80/100	200	1,20	0,488
HD5 220 OV P	40/50/60/80/100	220	1,20	0,502
HD5 260 OV P	40/50/60/80/100	260	1,20	0,531
HD5 300 OV P	40/50/60/80/100	300	1,20	0,559
HD5 400 OV P	40/50/60/80/100	400	1,50	0,789
HD5 460 OV P	40/50/60/80/100	450	1,50	0,833
HD5 500 OV P	40/50/60/80/100	500	2,00	1,171

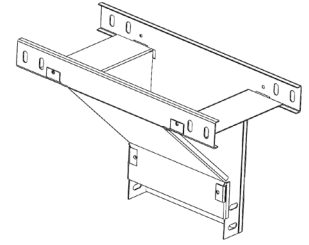
(P.G. / HDG) H40/50/60/80/100 Vertical Tees

With a width up to 1000 mm / height up to 200 mm.

It is possible to carry a lot of amount of cable with a width of up to 1000 mm.

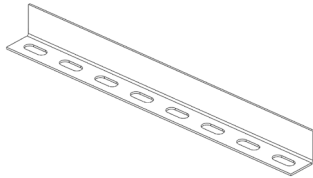
Ergonomic operation in every assembly area with its suitable design for all cable carrying systems.

info@ckcabletray.com
+90 542 123 35 75



/ Cable Tray / PG H50 Vertical Tees

PRODUCT CODE	HEIGHT	WIDTH	THICKNESS ± % 10	WEIGHT (KG/PCS)
HD5 050 VT P	40/50/60/80/100	50	1,5	4,531
HD5 100 VT P	40/50/60/80/100	100	1,5	4,866
HD5 160 VT P	40/50/60/80/100	160	1,5	5,191
HD5 200 VT P	40/50/60/80/100	200	1,5	5,516
HD5 220 VT P	40/50/60/80/100	220	1,5	5,679
HD5 260 VT P	40/50/60/80/100	260	1,5	5,841
HD5 300 VT P	40/50/60/80/100	300	1,5	6,166
HD5 400 VT P	40/50/60/80/100	400	2,0	8,698
HD5 460 VT P	40/50/60/80/100	460	2,0	9,088
HD5 500 VT P	40/50/60/80/100	500	2,0	9,478



(P.G. / HDG) Separators

With a width up to 1000 mm / height up to 200 mm.

It is possible to carry a lot of amount of cable with a width of up to 1000 mm.

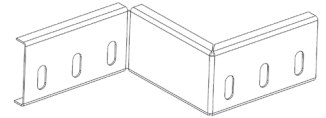
Ergonomic operation in every assembly area with its suitable design for all cable carrying systems.

info@ckcabletray.com
+90 542 123 35 75

/ Cable Tray / PG Separators

PRODUCT CODE	HEIGHT	LENGHT	THICKNESS ± % 10	WEIGHT (KG/MT)
HD4 SP2 P	40	1500	1,2	0,528
HD4 SP5 P	40	1500	1,5	0,671
HD5 SP2 P	50	1500	1,2	0,609
HD5 SP5 P	50	1500	1,5	0,775
HD6 SP2 P	60	1500	1,2	0,690
HD6 SP5 P	60	1500	1,5	0,878
HD8 SP2 P	80	1500	1,2	0,852
HD8 SP5 P	80	1500	1,5	1,085
HD1 SP2 P	100	1500	1,2	1,015

(P.G. / HDG) H40/50/60/80/100 Reducing Angles



With a width up to 1000 mm / height up to 200 mm.

It is possible to carry a lot of amount of cable with a width of up to 1000 mm.

Ergonomic operation in every assembly area with its suitable design for all cable carrying systems.

info@ckcabletray.com
+90 542 123 35 75

/ Cable Tray / PG H50 Reducing Angles Fixing Bends

PRODUCT CODE	HEIGHT	WIDTH	THICKNESS ± % 10	WEIGHT (KG/PCS)
RA5 050 P	40/50/60/80/100	50	1,5	0,149
RA5 100 P	40/50/60/80/100	100	1,5	0,188
RA5 160 P	40/50/60/80/100	160	1,5	0,235
RA5 200 P	40/50/60/80/100	200	1,5	0,266
RA5 220 P	40/50/60/80/100	220	1,5	0,282
RA5 260 P	40/50/60/80/100	160	1,5	0,235
RA5 300 P	40/50/60/80/100	300	1,5	0,345
RA5 400 P	40/50/60/80/100	400	2,0	0,564
RA5 460 P	40/50/60/80/100	460	2,0	0,626
RA5 500 P	40/50/60/80/100	500	2,0	0,668



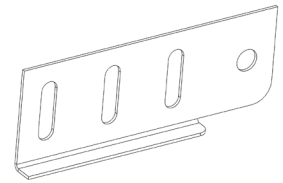
(P.G. / H.D.G.) Vertical Angle Connectors

With a width up to 1000 mm / height up to 200 mm.

It is possible to carry a lot of amount of cable with a width of up to 1000 mm.

Ergonomic operation in every assembly area with its suitable design for all cable carrying systems.

info@ckcabletray.com
+90 542 123 35 75



/ Cable Tray / PG H100 Reducing Angles

PRODUCT CODE	HEIGHT	WIDTH	THICKNESS ± % 10	WEIGHT (KG/PCS)
VAC 040 P	40	140	1,5	0,089
VAC 050 P	50	140	1,5	0,107
VAC 060 P	60	140	1,5	0,125
VAC 080 P	80	140	1,5	0,161
VAC 100 P	100	140	1,5	0,197
VAC 040 H	40	140	1,5	0,100
VAC 050 H	50	140	1,5	0,120
VAC 060 H	60	140	1,5	0,140
VAC 080 H	80	140	1,5	0,180

TK260100020-PG

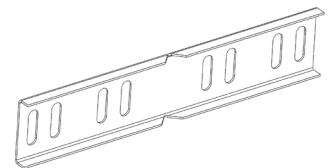
(P.G. / H.D.G.) Horizontal Angle Connectors

With a width up to 1000 mm / height up to 200 mm.

It is possible to carry a lot of amount of cable with a width of up to 1000 mm.

Ergonomic operation in every assembly area with its suitable design for all cable carrying systems.

info@ckcabletray.com
+90 542 123 35 75



/ Cable Tray / HDG H100 Reducing Angles

PRODUCT CODE	HEIGHT	WIDTH	THICKNESS ± % 10	WEIGHT (KG/PCS)
HAC 040 P	40	210	1,5	0,117
HAC 050 P	50	210	1,5	0,141
HAC 060 P	60	210	1,5	0,164
HAC 080 P	80	210	1,5	0,211
HAC 100 P	100	210	1,5	0,258
HAC 040 H	40	210	1,5	0,131
HAC 050 H	50	210	1,5	0,157
HAC 060 H	60	210	1,5	0,183
HAC 080 H	80	210	1,5	0,236

TK260100020-HDG

(H40/50/60/70/80/100 P.G. / HDG)

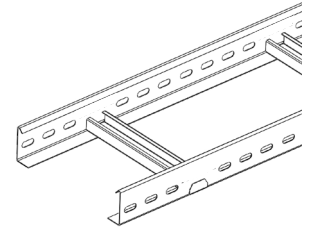
Cable Ladder

With a width up to 1000 mm / height up to 200 mm.

It is possible to carry a lot of amount of cable with a width of up to 1000 mm.

Ergonomic operation in every assembly area with its suitable design for all cable carrying systems.

info@ckcabletray.com
+90 542 123 35 75



/ Cable Tray / H50 PG Cable Ladder

PRODUCT CODE	HEIGHT	WIDTH	THICKNESS ± % 10	WEIGHT (KG/MT)
CL5 100 2CL P	40/50/60/70/80/100	100	1,2	1,567
CL5 200 2CL P	40/50/60/70/80/100	200	1,2	1,720
CL5 300 2CL P	40/50/60/70/80/100	300	1,2	1,874
CL5 400 5CL P	40/50/60/70/80/100	400	1,5	2,564
CL5 500 5CL P	40/50/60/70/80/100	500	1,5	2,755
CL5 600 5CL P	40/50/60/70/80/100	600	1,5	2,947

(H40/50/60/70/80/100 P.G. /HDG)

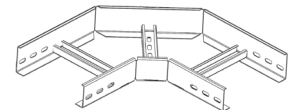
Cable Ladder 90° Bends

With a width up to 1000 mm / height up to 200 mm.

It is possible to carry a lot of amount of cable with a width of up to 1000 mm.

Ergonomic operation in every assembly area with its suitable design for all cable carrying systems.

info@ckcabletray.com
+90 542 123 35 75



/ Cable Ladder / H50 PG Cable Ladder Bends

PRODUCT CODE	HEIGHT	WIDTH	THICKNESS ± % 10	WEIGHT (KG/PCS)
CL5 100 LB P	40/50/60/70/80/100	100	1,2	0,890
CL5 200 LB P	40/50/60/70/80/100	200	1,2	1,139
CL5 300 LB P	40/50/60/70/80/100	300	1,2	1,389
CL5 400 LB P	40/50/60/70/80/100	400	1,2	1,786
CL5 500 LB P	40/50/60/70/80/100	500	1,2	2,068
CL5 600 LB P	40/50/60/70/80/100	600	1,2	2,350

(H40/50/60/70/80/100 P.G. / HDG)

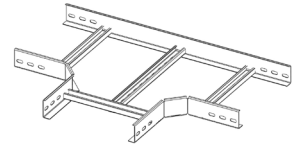
Cable Ladder Tee Bends

With a width up to 1000 mm / height up to 200 mm.

It is possible to carry a lot of amount of cable with a width of up to 1000 mm.

Ergonomic operation in every assembly area with its suitable design for all cable carrying systems.

info@ckcabletray.com
+90 542 123 35 75



/ Cable Ladder / H50 PG Cable Ladder Bends

PRODUCT CODE	HEIGHT	WIDTH	THICKNESS ± % 10	WEIGHT (KG/PCS)
CL4 100 TB P	40/50/60/70/80/100	100	1,2	1,040
CL4 200 TB P	40/50/60/70/80/100	200	1,2	1,234
CL4 300 TB P	40/50/60/70/80/100	300	1,2	1,428
CL4 400 TB P	40/50/60/70/80/100	400	1,2	1,768
CL4 500 TB P	40/50/60/70/80/100	500	1,2	2,291
CL4 600 TB P	40/50/60/70/80/100	600	1,2	2,572

(H40/50/60/70/80/100 P.G. / HDG)

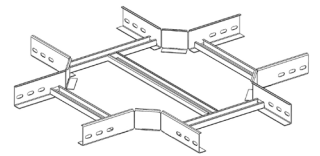
Cable Ladder Four Way Bends

With a width up to 1000 mm / height up to 200 mm.

It is possible to carry a lot of amount of cable with a width of up to 1000 mm.

Ergonomic operation in every assembly area with its suitable design for all cable carrying systems.

info@ckcabletray.com
+90 542 123 35 75



/ Cable Ladder / H50 PG Cable Ladder Bends

PRODUCT CODE	HEIGHT	WIDTH	THICKNESS ± % 10	WEIGHT (KG/PCS)
CL5 100 FB P	40/50/60/70/80/100	100	1,2	1,351
CL5 200 FB P	40/50/60/70/80/100	200	1,2	1,482
CL5 300 FB P	40/50/60/70/80/100	300	1,2	1,612
CL5 400 FB P	40/50/60/70/80/100	400	1,2	1,888
CL5 500 FB P	40/50/60/70/80/100	500	1,2	2,348
CL5 600 FB P	40/50/60/70/80/100	600	1,2	2,565

(H40/50/60/70/80/100 P.G. / HDG)

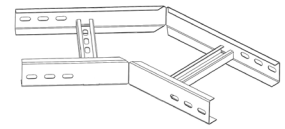
Cable Ladder 45° Way Bends

With a width up to 1000 mm / height up to 200 mm.

It is possible to carry a lot of amount of cable with a width of up to 1000 mm.

Ergonomic operation in every assembly area with its suitable design for all cable carrying systems.

info@ckcabletray.com
+90 542 123 35 75



/ Cable Ladder / H50 PG Cable Ladder Bends

PRODUCT CODE	HEIGHT	WIDTH	THICKNESS ± % 10	WEIGHT (KG/PCS)
CL5 100 4B P	40/50/60/70/80/100	100	1,2	0,860
CL5 200 4B P	40/50/60/70/80/100	200	1,2	1,101
CL5 300 4B P	40/50/60/70/80/100	300	1,2	1,343
CL5 400 4B P	40/50/60/70/80/100	400	1,2	1,726
CL5 500 4B P	40/50/60/70/80/100	500	1,2	1,999
CL5 600 4B P	40/50/60/70/80/100	600	1,2	2,271

(H40/50/60/70/80/100 P.G. / HDG)

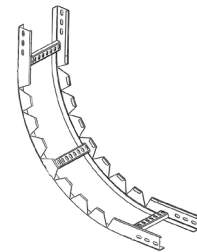
Inside / Outside 90° Bends (Adjustable)

With a width up to 1000 mm / height up to 200 mm.

It is possible to carry a lot of amount of cable with a width of up to 1000 mm.

Ergonomic operation in every assembly area with its suitable design for all cable carrying systems.

info@ckcabletray.com
+90 542 123 35 75



/ Cable Ladder / Inside / Outside 90° Bends (Adjustable)

PRODUCT CODE	HEIGHT	WIDTH	THICKNESS ± % 10	WEIGHT (KG/PCS)
CL5 100 IO P	40/50/60/70/80/100	100	1,2	1,485
CL5 200 IO P	40/50/60/70/80/100	200	1,2	1,630
CL5 300 IO P	40/50/60/70/80/100	300	1,2	1,775
CL5 400 IO P	40/50/60/70/80/100	400	1,5	2,429
CL5 500 IO P	40/50/60/70/80/100	500	1,5	2,610
CL5 600 IO P	40/50/60/70/80/100	600	1,5	2,792

(H40/50/60/70/80/100 P.G. / HDG)

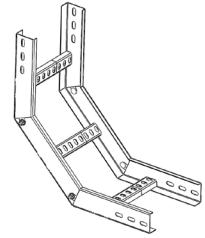
Inside 90° Bends (Fixed)

With a width up to 1000 mm / height up to 200 mm.

It is possible to carry a lot of amount of cable with a width of up to 1000 mm.

Ergonomic operation in every assembly area with its suitable design for all cable carrying systems.

info@ckcabletray.com
+90 542 123 35 75



/ Cable Ladder / Inside 90° Bends (Fixed)

PRODUCT CODE	HEIGHT	WIDTH	THICKNESS ± % 10	WEIGHT (KG/PCS)
CL5 100 IV P	40/50/60/70/80/100	100	1,2	1,121
CL5 200 IV P	40/50/60/70/80/100	200	1,2	1,259
CL5 300 IV P	40/50/60/70/80/100	300	1,2	1,388
CL5 400 IV P	40/50/60/70/80/100	400	1,2	1,669
CL5 500 IV P	40/50/60/70/80/100	500	1,2	1,839
CL5 600 IV P	40/50/60/70/80/100	600	1,2	2,005

(H40/50/60/70/80/100 P.G. / HDG)

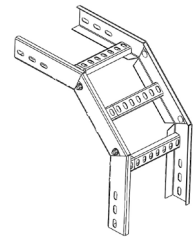
Outside 90° Bends (Fixed)

With a width up to 1000 mm / height up to 200 mm.

It is possible to carry a lot of amount of cable with a width of up to 1000 mm.

Ergonomic operation in every assembly area with its suitable design for all cable carrying systems.

info@ckcabletray.com
+90 542 123 35 75



/ Cable Ladder / Outside 90° Bends (Fixed)

PRODUCT CODE	HEIGHT	WIDTH	THICKNESS ± % 10	WEIGHT (KG/PCS)
CL5 100 OV P	40/50/60/70/80/100	100	1,2	1,097
CL5 200 OV P	40/50/60/70/80/100	200	1,2	1,232
CL5 300 OV P	40/50/60/70/80/100	300	1,2	1,358
CL5 400 OV P	40/50/60/70/80/100	400	1,2	1,632
CL5 500 OV P	40/50/60/70/80/100	500	1,2	1,799
CL5 600 OV P	40/50/60/70/80/100	600	1,2	1,961

(H40/50/60/70/80/100 P.G. / HDG)

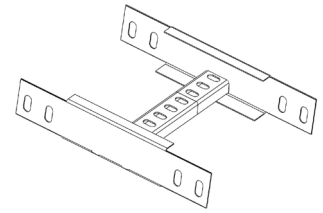
Level Change Units

With a width up to 1000 mm / height up to 200 mm.

It is possible to carry a lot of amount of cable with a width of up to 1000 mm.

Ergonomic operation in every assembly area with its suitable design for all cable carrying systems.

info@ckcabletray.com
+90 542 123 35 75



/ Cable Ladder / H50 Level Change Units (PG)

PRODUCT CODE	HEIGHT	WIDTH	THICKNESS ± % 10	WEIGHT (KG/PCS)
CL5 100 LC P	40/50/60/70/80/100	100	1,5	0,502
CL5 200 LC P	40/50/60/70/80/100	200	1,5	0,546
CL5 300 LC P	40/50/60/70/80/100	300	1,5	0,586
CL5 400 LC P	40/50/60/70/80/100	400	1,5	0,678
CL5 500 LC P	40/50/60/70/80/100	500	1,5	0,731
CL5 600 LC P	40/50/60/70/80/100	600	1,5	0,784

(H40/50/60/70/80/100 P.G. / HDG)

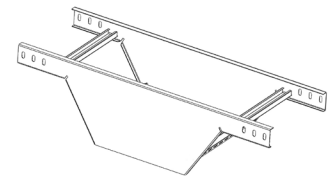
Vertical Tees

With a width up to 1000 mm / height up to 200 mm.

It is possible to carry a lot of amount of cable with a width of up to 1000 mm.

Ergonomic operation in every assembly area with its suitable design for all cable carrying systems.

info@ckcabletray.com
+90 542 123 35 75



/ Cable Ladder / H50 Vertical Tees (PG)

PRODUCT CODE	HEIGHT	WIDTH	THICKNESS ± % 10	WEIGHT (KG/PCS)
CL5 100 VT P	40/50/60/70/80/100	100	1,5	4,866
CL5 200 VT P	40/50/60/70/80/100	200	1,5	5,516
CL5 300 VT P	40/50/60/70/80/100	300	1,5	6,166
CL5 400 VT P	40/50/60/70/80/100	400	2	8,698
CL5 500 VT P	40/50/60/70/80/100	500	2	9,478
CL5 600 VT P	40/50/60/70/80/100	600	2	10,258

(H40/50/60/70/80/100 P.G. / HDG)

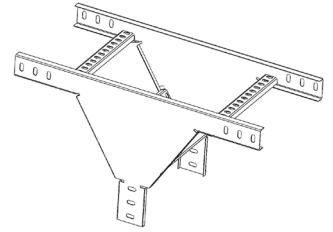
From Middle Tees

With a width up to 1000 mm / height up to 200 mm.

It is possible to carry a lot of amount of cable with a width of up to 1000 mm.

Ergonomic operation in every assembly area with its suitable design for all cable carrying systems.

info@ckcabletray.com
+90 542 123 35 75



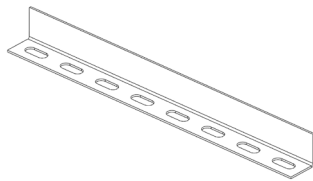
/ Cable Ladder / H50 From Middle Tees (HDG)

PRODUCT CODE	HEIGHT	WIDTH	THICKNESS ± % 10	WEIGHT (KG/PCS)
CL5 100 FT P	40/50/60/70/80/100	100	1,5	3,044
CL5 200 FT P	40/50/60/70/80/100	200	1,5	4,548
CL5 300 FT P	40/50/60/70/80/100	300	1,5	6,218
CL5 400 FT P	40/50/60/70/80/100	400	2	10,686
CL5 500 FT P	40/50/60/70/80/100	500	2	13,645
CL5 600 FT P	40/50/60/70/80/100	600	2	16,894

(H40/50/60/70/80/100 P.G. / HDG)

Seperators

With a width up to 1000 mm / height up to 200 mm.



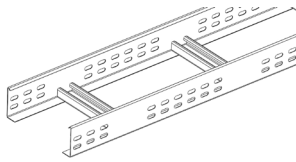
It is possible to carry a lot of amount of cable with a width of up to 1000 mm.

Ergonomic operation in every assembly area with its suitable design for all cable carrying systems.

info@ckcabletray.com
+90 542 123 35 75

/ Cable Ladder / PG Separators

PRODUCT CODE	HEIGHT	LENGHT	THICKNESS ± % 10	WEIGHT (KG/MT)
CL4 SP5 P	40/50/60/70/80/100	1500	1,5	0,528
CL5 SP5 P	40/50/60/70/80/100	1500	1,5	0,671
CL6 SP5 P	40/50/60/70/80/100	1500	1,5	0,609
CL7 SP5 P	40/50/60/70/80/100	1500	1,5	0,775
CL1 SP5 P	40/50/60/70/80/100	1500	1,5	0,690



(H70/100/125/150 P.G / H.D.G.)

Welded Cable Ladder (C Rungs)

With a width up to 1000 mm / height up to 200 mm.

It is possible to carry a lot of amount of cable with a width of up to 1000 mm.

Ergonomic operation in every assembly area with its suitable design for all cable carrying systems.

info@ckcabletray.com
+90 542 123 35 75

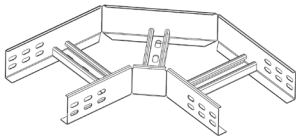
/ Cable Tray / H70 HDG Welded Cable Ladder (C Rungs)

PRODUCT CODE	HEIGHT	WIDTH	THICKNESS ± % 10	WEIGHT (KG/MT)
CC7 100 CL5 H	70/100/125/150	100	1,5	2,203
CC7 200 CL5 H	70/100/125/150	200	1,5	2,504
CC7 300 CL5 H	70/100/125/150	300	1,5	2,806
CC7 400 CL0 H	70/100/125/150	400	2,0	3,792
CC7 500 CL0 H	70/100/125/150	500	2,0	4,093
CC7 600 CL0 H	70/100/125/150	600	2,0	4,395

(H70/100/125/150 P.G / H.D.G.)

Welded Cable Ladder (C Rungs) 90° Bends

With a width up to 1000 mm / height up to 200 mm.



It is possible to carry a lot of amount of cable with a width of up to 1000 mm.

Ergonomic operation in every assembly area with its suitable design for all cable carrying systems.

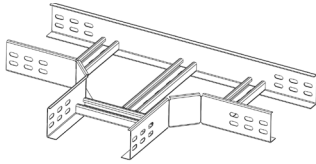
info@ckcabletray.com
+90 542 123 35 75

/ Welded Cable Ladder / H70 HDG Welded Cable Ladder (C Rungs) 90° Bends

PRODUCT CODE	HEIGHT	WIDTH	THICKNESS ± % 10	WEIGHT (KG/PCS)
CC7 100 LB H	70/100/125/150	100	1,5	1,339
CC7 200 LB H	70/100/125/150	200	1,5	1,779
CC7 300 LB H	70/100/125/150	300	1,5	2,221
CC7 400 LB H	70/100/125/150	400	2,00	3,209
CC7 500 LB H	70/100/125/150	500	2,00	3,711
CC7 600 LB H	70/100/125/150	600	2,00	4,213

(H70/100/125/150 P.G / H.D.G.)

Welded Cable Ladder (C Rungs) Tee Bends



With a width up to 1000 mm / height up to 200 mm.

It is possible to carry a lot of amount of cable with a width of up to 1000 mm.

Ergonomic operation in every assembly area with its suitable design for all cable carrying systems.

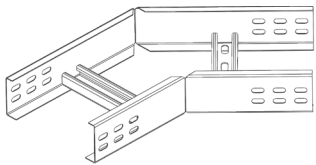
info@ckcabletray.com
+90 542 123 35 75

/ Welded Cable Ladder / H70 HDG Welded Cable Ladder (C Rungs) Tee Bends

PRODUCT CODE	HEIGHT	WIDTH	THICKNESS ± % 10	WEIGHT (KG/PCS)
CC7 100 TB H	70/100/125/150	100	1,5	1,746
CC7 200 TB H	70/100/125/150	200	1,5	2,114
CC7 300 TB H	70/100/125/150	300	1,5	2,482
CC7 400 TB H	70/100/125/150	400	2,00	3,458
CC7 500 TB H	70/100/125/150	500	2,00	4,292
CC7 600 TB H	70/100/125/150	600	2,00	4,783

(H70/100/125/150 P.G / H.D.G.)

Welded Cable Ladder (C Rungs) 45° Bends



With a width up to 1000 mm / height up to 200 mm.

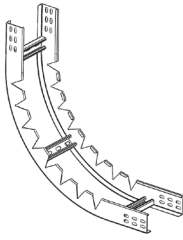
It is possible to carry a lot of amount of cable with a width of up to 1000 mm.

Ergonomic operation in every assembly area with its suitable design for all cable carrying systems.

info@ckcabletray.com
+90 542 123 35 75

/ Welded Cable Ladder / H70 HDG Welded Cable Ladder (C Rungs) 45° Bends

PRODUCT CODE	HEIGHT	WIDTH	THICKNESS ± % 10	WEIGHT (KG/PCS)
CC7 100 4B H	70/100/125/150	100	1,5	1,331
CC7 200 4B H	70/100/125/150	200	1,5	1,764
CC7 300 4B H	70/100/125/150	300	1,5	2,198
CC7 400 4B H	70/100/125/150	400	2,00	3,178
CC7 500 4B H	70/100/125/150	500	2,00	3,672
CC7 600 4B H	70/100/125/150	600	2,00	4,166



(H70/100/125/150 P.G / H.D.G.) Inside / Outside 90° Bends (Adjustable)

With a width up to 1000 mm / height up to 200 mm.

It is possible to carry a lot of amount of cable with a width of up to 1000 mm.

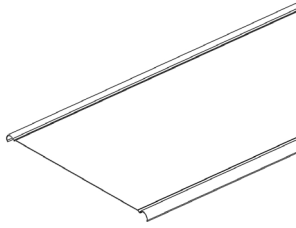
Ergonomic operation in every assembly area with its suitable design for all cable carrying systems.

info@ckcabletray.com
+90 542 123 35 75

/ Welded Cable Ladder / Inside / Outside 90° Bends (Adjustable)

PRODUCT CODE	HEIGHT	WIDTH	THICKNESS ± % 10	WEIGHT (KG/PCS)
CC7 100 IO H	70/100/125/150	100	1,5	2,087
CC7 200 IO H	70/100/125/150	200	1,5	2,373
CC7 300 IO H	70/100/125/150	300	1,5	2,658
CC7 400 IO H	70/100/125/150	400	2,00	3,592
CC7 500 IO H	70/100/125/150	500	2,00	3,878
CC7 600 IO H	70/100/125/150	600	2,00	4,163





(PG / HDG) Snap-On Heavy Duty Cable Tray Covers

With a width up to 400 mm

This product is used to protect the cables from external factors and to close the cable trays.

There is no need to use a cover clamp, bolt etc. for this product.

Click System design provides fast assembly. It is enough to press and lock after put on the Cable Tray.

info@ckcabletray.com
+90 542 123 35 75

/ Covers/ HDG Snap-On Heavy Duty Cable Tray Covers

PRODUCT CODE	HEIGHT	WIDTH	THICKNESS ± % 10	WEIGHT (KG/MT)
SO1 050 6CO P	10	50	0,6	0,275
SO1 100 7CO P	10	100	0,7	0,565
SO1 150 7CO P	10	150	0,7	0,801
SO1 200 7CO P	10	200	0,7	1,036
SO1 300 8CO P	10	300	0,8	1,758
SO1 400 9CO P	10	400	0,9	2,638

(PG / HDG) Heavy Duty Cable Trays & Cable Ladder

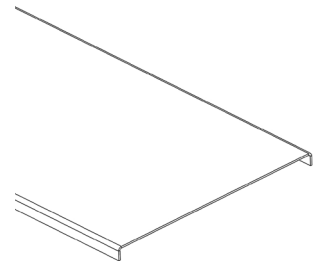
With a width up to 600 mm

This product is used to protect the cables from external factors and to close the cable trays.

It is possible to carry a lot of amount of cable with a width of up to 1000 mm.

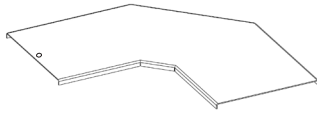
Ergonomic operation in every assembly area with its suitable design for all cable carrying systems.

info@ckcabletray.com
+90 542 123 35 75



/ Covers / HDG Heavy Duty Cable Tray Covers

PRODUCT CODE	HEIGHT	WIDTH	THICKNESS ± % 10	WEIGHT (KG/MT)
HD1 050 8CO P	10	50	0,8	0,385
HD1 100 8CO P	10	100	0,8	0,659
HD1 160 8CO P	10	160	0,8	0,989
HD1 200 1CO P	10	200	1,0	1,554
HD1 220 1CO P	10	220	1,0	1,696
HD1 260 1CO P	10	260	1,0	1,978
HD1 300 2CO P	10	300	1,2	2,763
HD1 400 2CO P	10	400	1,2	3,627
HD1 460 5CO P	10	460	1,5	5,275
HD1 500 5CO P	10	500	1,5	5,715
HD1 600 5CO P	10	600	1,5	6,814



(PG / HDG) Cable Ladder 90° Bend Covers

Cable Ladders

This product is used to protect the cables from external factors and to close the cable trays.

Ergonomic operation in every assembly area with its suitable design for all cable carrying systems.

info@ckcabletray.com
+90 542 123 35 75

/ Covers/ PG Cable Ladder 90° Bend Covers

PRODUCT CODE	HEIGHT	WIDTH	THICKNESS ± % 10	WEIGHT (KG/PCS)
CLCO 100 LB P	10	100	1,2	0,453
CLCO 200 LB P	10	200	1,2	0,945
CLCO 300 LB P	10	300	1,2	1,616
CLCO 400 LB P	10	400	1,2	2,466
CLCO 500 LB P	10	500	1,2	3,495

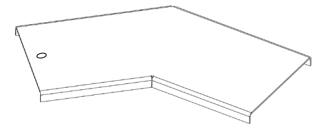
(PG / HDG) Cable Ladder 45° Bend Covers

Cable Ladders

This product is used to protect the cables from external factors and to close the cable trays.

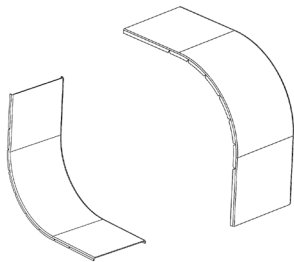
Ergonomic operation in every assembly area with its suitable design for all cable carrying systems.

info@ckcabletray.com
+90 542 123 35 75



/ Covers / PG Cable Ladder 45° Bend Covers

PRODUCT CODE	HEIGHT	WIDTH	THICKNESS ± % 10	WEIGHT (KG/PCS)
CLCO 100 4B P	10	100	1,2	0,429
CLCO 200 4B P	10	200	1,2	0,895
CLCO 300 4B P	10	300	1,2	1,531
CLCO 400 4B P	10	400	1,2	2,337
CLCO 500 4B P	10	500	1,2	3,312
CLCO 600 4B P	10	600	1,2	4,456



(PG / HDG) 90° Inside / Outside Vertical Bend Cover (Adjustable)

Cable Trays , Cable Ladders

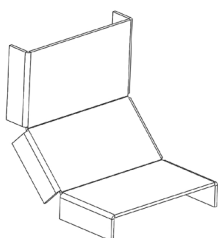
This product is used to protect the cables from external factors and to close the cable trays.

Ergonomic operation in every assembly area with its suitable design for all cable carrying systems.

info@ckcabletray.com
+90 542 123 35 75

/ Covers / HDG 90° Inside / Outside Vertical Bend Covers (Adjustable)

PRODUCT CODE	HEIGHT	WIDTH	THICKNESS ± % 10	WEIGHT (KG/PCS)
CLCO 050 IV P	10	50	1,2	0,568
CLCO 100 IV P	10	100	1,2	1,074
CLCO 160 IV P	10	160	1,2	1,554
CLCO 200 IV P	10	200	1,2	1,969
CLCO 220 IV P	10	220	1,2	2,111
CLCO 250 IV P	10	250	1,2	2,325
CLCO 300 IV P	10	300	1,2	2,864
CLCO 400 IV P	10	400	1,2	3,759
CLCO 450 IV P	10	450	1,2	4,365
CLCO 500 IV P	10	500	1,2	4,653
CLCO 600 IV P	10	600	1,2	5,548



(PG / HDG) H40-150 90° Inside Vertical Bend Cover (Fixed)

Cable Trays , Cable Ladders

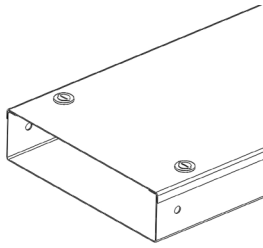
This product is used to protect the cables from external factors and to close the cable trays.

Ergonomic operation in every assembly area with its suitable design for all cable carrying systems.

info@ckcabletray.com
+90 542 123 35 75

/ Covers / H50 HDG 90° Inside Vertical Bend Covers (Fixed)

PRODUCT CODE	HEIGHT	WIDTH	THICKNESS ± % 10	WEIGHT (KG/PCS)
CLCO5 050 IV P	40-150	50	1,0	0,339
CLCO5 100 IV P	40-150	100	1,0	0,582
CLCO5 160 IV P	40-150	160	1,0	0,873
CLCO5 200 IV P	40-150	200	1,0	1,066
CLCO5 220 IV P	40-150	220	1,2	1,163
CLCO5 260 IV P	40-150	260	1,2	1,357
CLCO5 300 IV P	40-150	300	1,2	1,551
CLCO5 400 IV P	40-150	400	1,2	2,036
CLCO5 460 IV P	40-150	460	1,2	2,327
CLCO5 500 IV P	40-150	500	1,2	2,521
CLCO5 600 IV P	40-150	600	1,2	3,005



(PG/HDG) H50 Trunking Cable Trays

With a width up to 200 mm / height up to 200 mm

It is possible to carry a lot of amount of cable with a width of up to 200 mm.

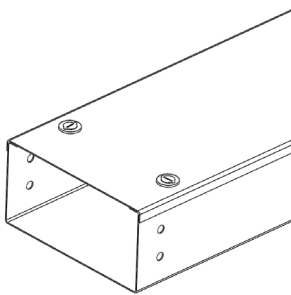
Trunking Cable Trays can be installed quickly. It provides economic and easy working opportunities.

This product is designed for cable tray carrying system. It can be used for different purposes

info@ckcabletray.com
+90 542 123 35 75

/ Trunking Cable Trays / H50 Trunking Cable Trays

PRODUCT CODE	HEIGHT	WIDTH	THICKNESS ± % 10	WEIGHT (KG/MT)
TC5 050 1CT P	50	50	1,0	1,837
TC5 075 1CT P	50	75	1,0	2,229
TC5 100 1CT P	50	100	1,0	2,622
TC5 150 1CT P	50	150	1,0	3,407
TC5 200 1CT P	50	200	1,0	4,192
TC5 050 1CT H	50	50	1,0	1,837
TC5 075 1CT H	50	75	1,0	2,229
TC5 100 1CT H	50	100	1,0	2,622
TC5 150 1CT H	50	150	1,0	3,407
TC5 200 1CT H	50	200	1,0	4,192



(PG/HDG) H75 Trunking Cable Trays

With a width up to 200 mm / height up to 200 mm

It is possible to carry a lot of amount of cable with a width of up to 200 mm.

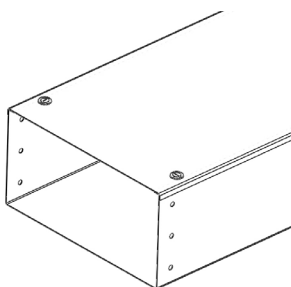
Trunking Cable Trays can be installed quickly. It provides economic and easy working opportunities.

This product is designed for cable tray carrying system. It can be used for different purposes

info@ckcabletray.com
+90 542 123 35 75

/ Trunking Cable Trays / H75 Trunking Cable Trays

PRODUCT CODE	HEIGHT	WIDTH	THICKNESS ± % 10	WEIGHT (KG/MT)
TC7 075 1CT P	75	75	1,0	2,622
TC7 100 1CT P	75	100	1,0	3,014
TC7 150 1CT P	75	150	1,0	3,799
TC7 200 1CT P	75	200	1,0	4,584
TC7 075 1CT H	75	50	1,0	2,229
TC7 100 1CT H	75	100	1,0	3,014
TC7 150 1CT H	75	150	1,0	3,799
TC7 200 1CT H	75	200	1,0	4,584



(PG/HDG) H100 Trunking Cable

With a width up to 200 mm / height up to 200 mm

It is possible to carry a lot of amount of cable with a width of up to 200 mm.

Trunking Cable Trays can be installed quickly. It provides economic and easy working opportunities.

This product is designed for cable tray carrying system. It can be used for different purposes

info@ckcabletray.com
+90 542 123 35 75

/ Trunking Cable Trays / H100 Trunking Cable Trays

PRODUCT CODE	HEIGHT	WIDTH	THICKNESS ± % 10	WEIGHT (KG/MT)
TC1 100 1CT P	100	100	1,0	3,407
TC1 150 1CT P	100	150	1,0	4,192
TC1 200 1CT P	100	200	1,0	4,977
TC1 100 1CT H	100	100	1,0	3,407
TC1 150 1CT H	100	150	1,0	4,192
TC1 200 1CT H	100	200	1,0	4,977

(PG/HDG) H150 Trunking Cable Trays

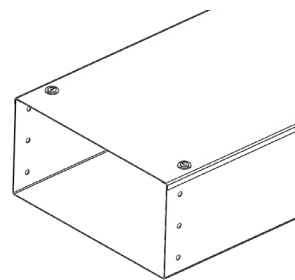
With a width up to 200 mm / height up to 200 mm

It is possible to carry a lot of amount of cable with a width of up to 200 mm.

Trunking Cable Trays can be installed quickly. It provides economic and easy working opportunities.

This product is designed for cable tray carrying system. It can be used for different purposes

info@ckcabletray.com
+90 542 123 35 75



/ Trunking Cable Trays / H150 Trunking Cable Trays

PRODUCT CODE	HEIGHT	WIDTH	THICKNESS ± % 10	WEIGHT (KG/MT)
TC2 150 1CT P	150	150	1,0	4,977
TC2 200 1CT P	150	200	1,0	5,762
TC2 150 1CT H	150	150	1,0	4,977
TC2 200 1CT H	150	200	1,0	0,000

(PG/HDG) H200 Trunking Cable

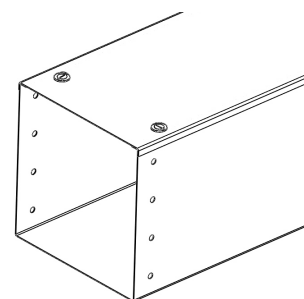
With a width up to 200 mm / height up to 200 mm

It is possible to carry a lot of amount of cable with a width of up to 200 mm.

Trunking Cable Trays can be installed quickly. It provides economic and easy working opportunities.

This product is designed for cable tray carrying system. It can be used for different purposes

info@ckcabletray.com
+90 542 123 35 75



/ Trunking Cable Trays / H150 Trunking Cable Trays

PRODUCT CODE	HEIGHT	WIDTH	THICKNESS ± % 10	WEIGHT (KG/MT)
TC3 200 1CT P	200	200	1,0	6,547
TC3 200 1CT H	200	200	1,0	6,547

(PG/HDG) Trunking Cable Tray Connection Cou-

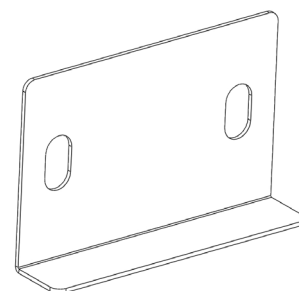
With a width up to 200 mm / height up to 200 mm

It is possible to carry a lot of amount of cable with a width of up to 200 mm.

Trunking Cable Trays can be installed quickly. It provides economic and easy working opportunities.

This product is designed for cable tray carrying system. It can be used for different purposes

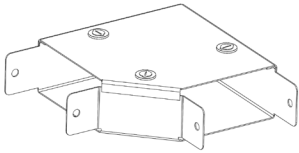
info@ckcabletray.com
+90 542 123 35 75



/ Trunking Cable Trays / Trunking Cable Tray Connection Couplers

PRODUCT CODE	HEIGHT	WIDTH	THICKNESS ± % 10	WEIGHT (KG/PCS)
TCC5 070 10 P	50	70	1,0	0,032
TCC7 070 10 P	75	70	1,0	0,045
TCC1 070 10 P	100	70	1,0	0,058
TCC2 070 10 P	150	70	1,0	0,084
TCC3 070 10 P	200	70	1,0	0,111
TCC5 070 10 H	50	70	1,0	0,035
TCC7 070 10 H	75	70	1,0	0,049
TCC1 070 10 H	100	70	1,0	0,063
TCC2 070 10 H	150	70	1,0	0,092
TCC3 070 10 H	200	70	1,0	0,121

(PG/HDG) H50-200 Trunking Cable Tray



With a width up to 200 mm / height up to 200 mm

It is possible to carry a lot of amount of cable with a width of up to 200 mm.

Trunking Cable Trays can be installed quickly. It provides economic and easy working opportunities.

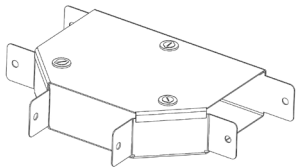
This product is designed for cable tray carrying system. It can be used for different purposes

info@ckcabletray.com
+90 542 123 35 75

/ Trunking Cable Trays / H50 Trunking Cable Tray 90° Bends

PRODUCT CODE	HEIGHT	WIDTH	THICKNESS ± % 10	WEIGHT (KG/PCS)
TC5 050 LB P	50-200	50	1,0	0,354
TC5 075 LB P	50-200	75	1,0	0,478
TC5 100 LB P	50-200	100	1,0	0,619
TC5 150 LB P	50-200	150	1,0	0,957
TC5 200 LB P	50-200	200	1,0	1,295
TC5 050 LB H	50-200	50	1,0	0,354
TC5 075 LB H	50-200	75	1,0	0,478
TC5 100 LB H	50-200	100	1,0	0,619
TC5 150 LB H	50-200	150	1,0	0,957
TC5 200 LB H	50-200	200	1,0	1,295

(PG/HDG) H50-200 Trunking Cable Tray Tee



With a width up to 200 mm / height up to 200 mm

It is possible to carry a lot of amount of cable with a width of up to 200 mm.

Trunking Cable Trays can be installed quickly. It provides economic and easy working opportunities.

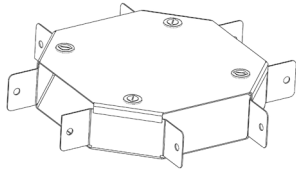
This product is designed for cable tray carrying system. It can be used for different purposes

info@ckcabletray.com
+90 542 123 35 75

/ Trunking Cable Trays / H50 Trunking Cable Tray Tee Bends

PRODUCT CODE	HEIGHT	WIDTH	THICKNESS ± % 10	WEIGHT (KG/PCS)
TC5 050 TB P	50-200	50	1,0	0,458
TC5 075 TB P	50-200	75	1,0	0,588
TC5 100 TB P	50-200	100	1,0	0,733
TC5 150 TB P	50-200	150	1,0	1,092
TC5 200 TB P	50-200	200	1,0	1,404
TC5 050 TB H	50-200	50	1,0	0,458
TC5 075 TB H	50-200	75	1,0	0,588
TC5 100 TB H	50-200	100	1,0	0,733
TC5 150 TB H	50-200	150	1,0	1,092
TC5 200 TB H	50-200	200	1,0	1,404





(PG/HDG) H50 Trunking Cable Tray Four Way

With a width up to 200 mm / height up to 200 mm

It is possible to carry a lot of amount of cable with a width of up to 200 mm.

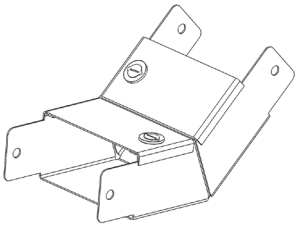
Trunking Cable Trays can be installed quickly. It provides economic and easy working opportunities.

This product is designed for cable tray carrying system. It can be used for different purposes

info@ckcabletray.com
+90 542 123 35 75

/ Trunking Cable Trays / H50 Trunking Cable Tray Four Way Bends

PRODUCT CODE	HEIGHT	WIDTH	THICKNESS ± % 10	WEIGHT (KG/PCS)
TC5 050 FB P	50	50	1,0	0,863
TC5 075 FB P	50	75	1,0	0,572
TC5 100 FB P	50	100	1,0	0,707
TC5 150 FB P	50	150	1,0	1,232
TC5 200 FB H	50	200	1,0	1,602
TC5 050 FB H	50	50	1,0	0,863
TC5 075 FB H	50	75	1,0	0,572
TC5 100 FB H	50	100	1,0	0,707
TC5 150 FB H	50	150	1,0	1,232
TC5 200 FB H	50	200	1,0	1,602



(PG/HDG) H50-200 Trunking Cable Tray Vertical

With a width up to 200 mm / height up to 200 mm

It is possible to carry a lot of amount of cable with a width of up to 200 mm.

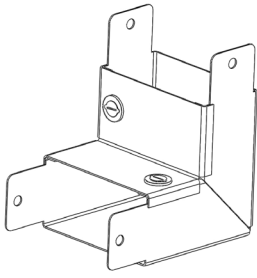
Trunking Cable Trays can be installed quickly. It provides economic and easy working opportunities.

This product is designed for cable tray carrying system. It can be used for different purposes

info@ckcabletray.com
+90 542 123 35 75

/ Trunking Cable Trays / H50 Trunking Cable Tray Vertical 45° Bends

PRODUCT CODE	HEIGHT	WIDTH	THICKNESS ± % 10	WEIGHT (KG/PCS)
TC5 050 4V P	50-200	50	1,0	0,286
TC5 075 4V P	50-200	75	1,0	0,328
TC5 100 4V P	50-200	100	1,0	0,374
TC5 150 4V P	50-200	150	1,0	0,468
TC5 200 4V P	50-200	200	1,0	0,562
TC5 050 4V H	50-200	50	1,0	0,286
TC5 075 4V H	50-200	75	1,0	0,328
TC5 100 4V H	50-200	100	1,0	0,374
TC5 150 4V H	50-200	150	1,0	0,468
TC5 200 4V H	50-200	200	1,0	0,562



(PG/HDG) H50-200 Trunking Cable Tray Vertical 90° Bends

With a width up to 200 mm / height up to 200 mm

It is possible to carry a lot of amount of cable with a width of up to 200 mm.

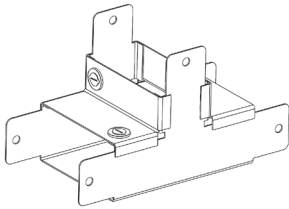
Trunking Cable Trays can be installed quickly. It provides economic and easy working opportunities.

This product is designed for cable tray carrying system. It can be used for different purposes

info@ckcabletray.com
+90 542 123 35 75

/ Trunking Cable Trays / H50 Trunking Cable Tray Vertical 90° Bends

PRODUCT CODE	HEIGHT	WIDTH	THICKNESS ± % 10	WEIGHT (KG/PCS)
TC5 050 9V P	50-200	50	1,0	0,286
TC5 075 9V P	50-200	75	1,0	0,328
TC5 100 9V P	50-200	100	1,0	0,374
TC5 150 9V P	50-200	150	1,0	0,468
TC5 200 9V P	50-200	200	1,0	0,562
TC5 050 9V H	50-200	50	1,0	0,286
TC5 075 9V H	50-200	75	1,0	0,328
TC5 100 9V H	50-200	100	1,0	0,374
TC5 150 9V H	50-200	150	1,0	0,468
TC5 200 9V H	50-200	200	1,0	0,562



(PG/HDG) H50 Trunking Cable Tray Vertical Tee Bends

With a width up to 200 mm / height up to 200 mm

It is possible to carry a lot of amount of cable with a width of up to 200 mm.

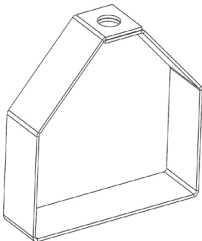
Trunking Cable Trays can be installed quickly. It provides economic and easy working opportunities.

This product is designed for cable tray carrying system. It can be used for different purposes

info@ckcabletray.com
+90 542 123 35 75

/ Trunking Cable Trays / H50 Trunking Cable Tray Vertical Tee Bends

PRODUCT CODE	HEIGHT	WIDTH	THICKNESS ± % 10	WEIGHT (KG/PCS)
TC5 050 VT P	50	50	1,0	0,374
TC5 075 VT P	50	75	1,0	0,447
TC5 100 VT P	50	100	1,0	0,499
TC5 150 VT P	50	150	1,0	0,619
TC5 200 VT P	50	200	1,0	0,738
TC5 050 VT H	50	50	1,0	0,374
TC5 075 VT H	50	75	1,0	0,447
TC5 100 VT H	50	100	1,0	0,499
TC5 150 VT H	50	150	1,0	0,619
TC5 200 VT H	50	200	1,0	0,738



(PG / HDG) Trunking Cable Tray Carriers

With a width up to 200 mm / height up to 200 mm

It is possible to carry a lot of amount of cable with a width of up to 200 mm.

Trunking Cable Trays can be installed quickly. It provides economic and easy working opportunities.

This product is designed for cable tray carrying system. It can be used for different purposes

info@ckcabletray.com
+90 542 123 35 75

/ Trunking Cable Trays / Trunking Cable Tray Carriers

PRODUCT CODE	HEIGHT	WIDTH	THICKNESS ± % 10	WEIGHT (KG/PCS)
TC5 050 CR1 P	55	55	1,0	0,087
TC5 075 CR1 P	85	85	1,0	0,117
TC5 100 CR1 P	105	105	1,0	0,158
TC5 150 CR1 P	155	155	1,0	0,168
TC5 200 CR1 P	205	205	1,0	0,194
TC5 050 CR1 H	55	55	1,0	0,095
TC5 075 CR1 H	85	85	1,0	0,128
TC5 100 CR1 H	105	105	1,0	0,172
TC5 150 CR1 H	155	155	1,0	0,183
TC5 200 CR1 H	205	205	1,0	0,212

(PG / HDG) Trunking Cable Tray Carriers

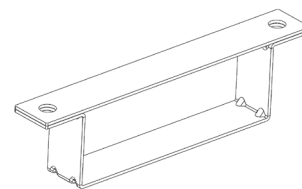
With a width up to 200 mm / height up to 200 mm

It is possible to carry a lot of amount of cable with a width of up to 200 mm.

Trunking Cable Trays can be installed quickly. It provides economic and easy working opportunities.

This product is designed for cable tray carrying system. It can be used for different purposes

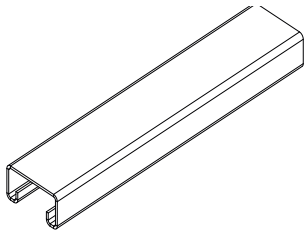
info@ckcabletray.com
+90 542 123 35 75



/ Trunking Cable Trays / PG Trunking Cable Tray Carrier

PRODUCT CODE	HEIGHT	WIDTH	THICKNESS ± % 10	WEIGHT (KG/PCS)
TC5 050 CR2 P	55	50	1,0	0,153
TC5 075 CR2 P	55	75	1,0	0,178
TC5 100 CR2 P	55	100	1,0	0,204
TC5 150 CR2 P	55	150	1,0	0,250
TC5 200 CR2 P	55	200	1,0	0,290
TC7 075 CR2 P	80	75	1,0	0,204
TC7 100 CR2 P	80	100	1,0	0,229
TC7 150 CR2 P	80	150	1,0	0,275
TC7 200 CR2 P	80	200	1,0	0,326
TC1 100 CR2 P	105	100	1,0	0,250
TC1 150 CR2 P	105	150	1,0	0,301
TC1 200 CR2 P	105	200	1,0	0,454
TC2 150 CR2 P	155	150	1,0	0,448
TC2 200 CR2 P	155	200	1,0	0,408
TC3 200 CR2 P	205	200	1,0	0,459





(PG/HDG) 41x21 C Profiles

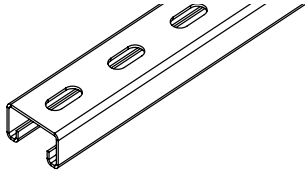
Cable Trays , Cable Ladders , Wiremesh Cable Trays , Trunking Cable Trays

C Profiles can be used in many areas as well as in cable trays assembly.

C Profile can be used in different sectors and in different sizes. Therefore, holes can be added to the profiles to facilitate use. There are options without holes, one side with holes and three sides with holes. info@ckcabletray.com +90 542 123 35 75

/ C Profile / 41x21 C Profiles (No Holes)

PRODUCT CODE	HEIGHT	WIDTH	LENGTH	THICKNESS ± %10	WEIGHT (KG/MT)
C0 21 5R P	21	41	3000	1,5	1,066
C0 21 0R P	21	41	3000	2,0	1,447
C0 21 4R P	21	41	3000	2,5	1,827
C0 21 5R H	21	41	3000	1,5	1,119
C0 21 0R H	21	41	3000	2,0	1,519
C0 21 4R H	21	41	3000	2,5	1,919



(PG/HDG) 41x21 C Profiles

Cable Trays , Cable Ladders , Wiremesh Cable Trays , Trunking Cable Trays

C Profiles can be used in many areas as well as in cable trays assembly.

C Profile can be used in different sectors and in different sizes. Therefore, holes can be added to the profiles to facilitate use. There are options without holes, one side with holes and three sides with holes. info@ckcabletray.com +90 542 123 35 75

/ C Profile / 41x21 C Profiles (One Holes)

PRODUCT CODE	HEIGHT	WIDTH	LENGTH	THICKNESS ± %10	WEIGHT (KG/MT)
C1 21 5R P	21	41	3000	1,5	1,034
C1 21 0R P	21	41	3000	2,0	1,403
C1 21 4R P	21	41	3000	2,5	1,773
C1 21 5R H	21	41	3000	1,5	1,096
C1 21 0R H	21	41	3000	2,0	1,488
C1 21 4R H	21	41	3000	2,5	1,879

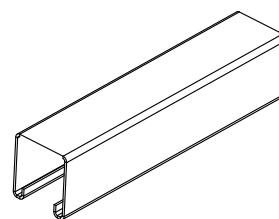
(PG/HDG) 41x41 C Profiles

Cable Trays , Cable Ladders , Wiremesh Cable Trays , Trunking Cable Trays

C Profiles can be used in many areas as well as in cable trays assembly.

C Profile can be used in different sectors and in different sizes. Therefore, holes can be added to the profiles to facilitate use. There are options without holes, one side with holes and three sides with holes.

info@ckcabletray.com
+90 542 123 35 75



/ C Profile / 41x41 C Profiles (No Holes)

PRODUCT CODE	HEIGHT	WIDTH	LENGTH	THICKNESS ± %10	WEIGHT (KG/MT)
C0 41 5R P	41	41	3000	1,5	1,506
C0 41 0R P	41	41	3000	2,0	2,043
C0 41 4R P	41	41	3000	2,5	2,581
C0 41 5R H	41	41	3000	1,5	1,581
C0 41 0RH	41	41	3000	2,0	2,146

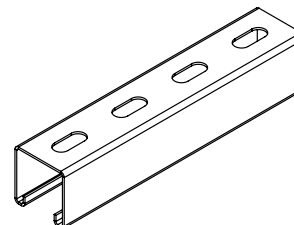
(PG/HDG) 41x41 C Profiles

Cable Trays , Cable Ladders , Wiremesh Cable Trays , Trunking Cable Trays

C Profiles can be used in many areas as well as in cable trays assembly.

C Profile can be used in different sectors and in different sizes. Therefore, holes can be added to the profiles to facilitate use. There are options without holes, one side with holes and three sides with holes.

info@ckcabletray.com
+90 542 123 35 75



/ C Profile / 41x41 C Profiles (One Holes)

PRODUCT CODE	HEIGHT	WIDTH	LENGTH	THICKNESS ± %10	WEIGHT (KG/MT)
C1 41 5R P	41	41	3000	1,5	1,460
C1 41 0R P	41	41	3000	2,0	1,982
C1 41 4R P	41	41	3000	2,5	2,504
C1 41 5R H	41	41	3000	1,5	1,548
C1 41 0R H	41	41	3000	2,0	2,101

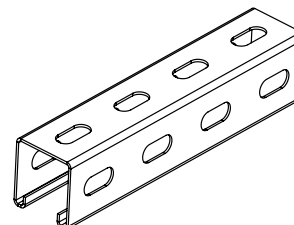
(PG/HDG) 41x41 C Profiles

Cable Trays , Cable Ladders , Wiremesh Cable Trays , Trunking Cable Trays

C Profiles can be used in many areas as well as in cable trays assembly.

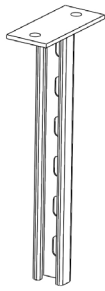
C Profile can be used in different sectors and in different sizes. Therefore, holes can be added to the profiles to facilitate use. There are options without holes, one side with holes and three sides with holes.

info@ckcabletray.com
+90 542 123 35 75



/ C Profile / 41x41 C Profiles (Three Holes)

PRODUCT CODE	HEIGHT	WIDTH	LENGTH	THICKNESS ± %10	WEIGHT (KG/MT)
C3 41 5R P	41	41	3000	1,5	1,415
C3 41 0R P	41	41	3000	2,0	1,921
C3 41 4R P	41	41	3000	2,5	2,426
C3 41 5R H	41	41	3000	1,5	1,468
C3 41 0R H	41	41	3000	2,0	1,993



(HDG) 41x21 / 41x41 C Profile Support Systems

Cable Trays , Cable Ladders , Wiremesh Cable Trays , Trunking Cable Trays

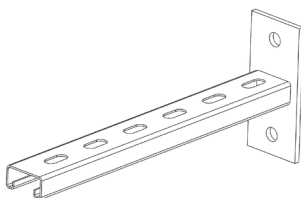
C Profiles can be used in many areas as well as in cable trays assembly.

C Profile can be used in different sectors and in different sizes. Therefore, holes can be added to the profiles to facilitate use. There are options without holes, one side with holes and three sides with holes.

info@ckcabletray.com
+90 542 123 35 75

/ C Profile / 41x21 C Hanging Support Systems

PRODUCT CODE	HEIGHT	WIDTH	LENGTH	THICKNESS ± %10	WEIGHT(KG/PCS)
C21 050 0S H	21	41	500	2	0,960
C21 100 0S H	21	41	1000	2	1,646
C21 150 0S H	21	41	1500	2	2,331
C21 200 0S H	21	41	2000	2	3,016
C21 250 0S H	21	41	2500	2	3,702
C21 300 0S H	21	41	3000	2	4,387
C21 050 4S H	21	41	500	2,5	1,151
C21 100 4S H	21	41	1000	2,5	2,026
C21 150 4S H	21	41	1500	2,5	2,902
C21 200 4S H	21	41	2000	2,5	3,778
C21 250 4S H	21	41	2500	2,5	4,653
C21 300 4S H	21	41	3000	2,5	5,529



(HDG / PG) 41x21 / 41x41 C Profile Brackets

Cable Trays , Cable Ladders , Wiremesh Cable Trays , Trunking Cable Trays

C Profiles can be used in many areas as well as in cable trays assembly.

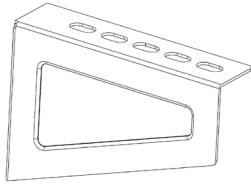
C Profile can be used in different sectors and in different sizes. Therefore, holes can be added to the profiles to facilitate use. There are options without holes, one side with holes and three sides with holes.

info@ckcabletray.com
+90 542 123 35 75

/ C Profile / 41x21 C Profile Brackets

PRODUCT CODE	HEIGHT	WIDTH	LENGTH	THICKNESS ± %10	WEIGHT(KG/PCS)
C21 100 5PB H	21	41	100	1,5	0,385
C21 200 5PB H	21	41	200	1,5	0,490
C21 300 5PB H	21	41	300	1,5	0,595
C21 400 5PB H	21	41	400	1,5	0,700
C21 500 5PB H	21	41	500	1,5	0,805
C21 600 5PB H	21	41	600	1,5	0,910
C21 100 0PB H	21	41	100	2,0	0,424
C21 200 0PB H	21	41	200	2,0	0,568
C21 300 0PB H	21	41	300	2,0	0,712
C21 400 0PB H	21	41	400	2,0	0,855
C21 500 0PB H	21	41	500	2,0	0,999
C21 600 0PB H	21	41	600	2,0	1,143





(PG/HDG) Support For Wall Mounting

Cable Trays , Cable Ladders , Wiremesh Cable Trays , Trunking Cable Trays

This product is designed for cable tray carrying system. It can be used for different purposes

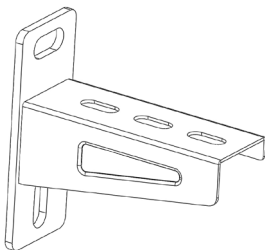
This product is used by fixing it to the Cable Tray with M8x15 Bolt / Nut.

Ergonomic operation in every assembly area with its suitable design for all cable carrying systems.

info@ckcabletray.com
+90 542 123 35 75

/ Support Systems / Support For Wall Mounting

PRODUCT CODE	HEIGHT	WIDTH	LENGTH	THICKNESS ± %10	WEIGHT(KG/PCS)
SW1 050 P	90	32	60	1,5	0,077
SW1 100 P	90	32	110	1,5	0,122
SW1 160 P	90	32	170	1,5	0,173
SW1 200 P	90	32	210	1,5	0,345
SW1 300 P	90	32	310	1,5	0,682
SW1 400 P	90	32	410	2,0	1,111
SW1 500 P	90	32	510	2,0	1,346
SW1 660 P	90	32	610	2,0	1,581
SW1 050 H	90	32	60	1,5	0,085
SW1 100 H	90	32	110	1,5	0,134
SW1 160 H	90	32	170	1,5	0,191
SW1 200 H	90	32	210	1,5	0,381
SW1 300 H	90	32	310	1,5	0,753
SW1 400 H	90	32	410	2,0	1,228
SW1 500 H	90	32	510	2,0	1,488
SW1 660 H	90	32	610	2,0	1,747



(EG/HDG) Support For Wall Mounting

Cable Trays , Cable Ladders , Wiremesh Cable Trays , Trunking Cable Trays

This product is designed for cable tray carrying system. It can be used for different purposes

This product is used by fixing it to the Cable Tray with M8x15 Bolt / Nut.

Ergonomic operation in every assembly area with its suitable design for all cable carrying systems.

info@ckcabletray.com
+90 542 123 35 75

/ Support Systems / Support For Wall Mounting (Welded)

PRODUCT CODE	HEIGHT	WIDTH	LENGTH	THICKNESS ± %10	WEIGHT(KG/PCS)
SW2 100 E	75	45	100	1,5	0,000
SW2 200 E	75	45	200	1,5	0,000
SW2 300 E	75	45	300	1,5	0,000
SW2 400 E	110	45	400	2,0	0,000
SW2 500 E	110	45	500	2,0	0,000
SW2 660 E	110	45	600	2,0	0,000
SW2 100 H	75	45	100	1,5	0,226
SW2 200 H	75	45	200	1,5	0,336
SW2 300 H	75	45	300	1,5	0,615
SW2 400 H	110	45	400	2,0	0,820
SW2 500 H	110	45	500	2,0	0,971
SW2 660 H	110	45	600	2,0	1,123

(HDG) Wall and Floor Fixing Units

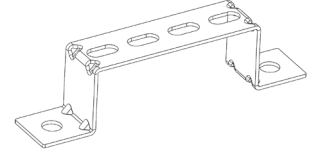
Cable Trays , Cable Ladders , Wiremesh Cable Trays , Trunking Cable Trays

This product is designed for cable tray carrying system. It can be used for different purposes

This product is used by fixing it to the Cable Tray with M8x15 Bolt / Nut.

Ergonomic operation in every assembly area with its suitable design for all cable carrying systems.

info@ckcabletray.com
+90 542 123 35 75



/ Support Systems / Wall and Floor Fixing Units

PRODUCT CODE	HEIGHT	WIDTH	LENGTH	THICKNESS \pm %10	WEIGHT(KG/PCS)
WF30 100 H	40	30	100	3,0	0,182
WF30 200 H	40	30	200	3,0	0,256
WF30 300 H	40	30	300	3,0	0,330
WF30 400 H	40	30	400	3,0	0,404
WF30 500 H	40	30	500	3,0	0,478
WF30 600 H	40	30	600	3,0	0,553

(PG/HDG) Bracket for Ceiling Mounting

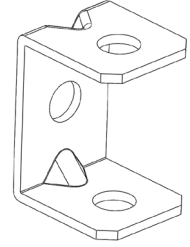
Cable Trays , Cable Ladders , Wiremesh Cable Trays , Trunking Cable Trays

This product is designed for cable tray carrying system. It can be used for different purposes

This product is used by fixing it to the Cable Tray with M8x15 Bolt / Nut.

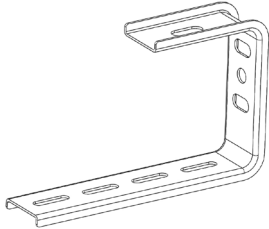
Ergonomic operation in every assembly area with its suitable design for all cable carrying systems.

info@ckcabletray.com
+90 542 123 35 75



/ Support Systems / Bracket for ceiling Mounting

PRODUCT CODE	HEIGHT	WIDTH	LENGTH	THICKNESS \pm %10	WEIGHT(KG/PCS)
BCM 1 P	40	30	100	3,0	0,111
BCM 1 H	40	30	200	3,0	0,120



(PG / HDG) Cable Tray Carrier (C Type)

Cable Trays , Cable Ladders , Wiremesh Cable Trays , Trunking Cable Trays

Kablo Kanalı Taşıma için dizayn edilmiştir.Özel amaçlar içinde kullanılabilir.

This product is used by fixing it to the Cable Tray with M8x15 Bolt / Nut.

Ergonomic operation in every assembly area with its suitable design for all cable carrying systems.

info@ckcabletray.com
+90 542 123 35 75

/ Support Systems / Cable Tray Carrier

PRODUCT CODE	HEIGHT	WIDTH	LENGTH	THICKNESS \pm %10	WEIGHT(KG/PCS)
SW3 050 P	125	43	60	2,0	0,281
SW3 100 P	125	43	110	2,0	0,300
SW3 160 P	125	43	160	2,0	0,355
SW3 200 P	125	43	210	2,0	0,392
SW3 260 P	125	43	270	2,0	0,448
SW3 300 P	125	43	310	2,0	0,485

(PG / HDG) Cable Tray Carrier (L Type)

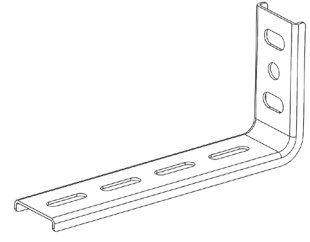
Cable Trays , Cable Ladders , Wiremesh Cable Trays , Trunking Cable Trays

This product is designed for cable tray carrying system. It can be used for different purposes

This product is used by fixing it to the Cable Tray with M8x15 Bolt / Nut.

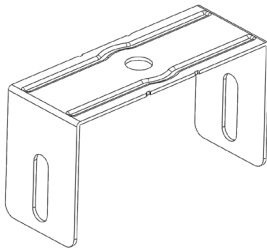
Ergonomic operation in every assembly area with its suitable design for all cable carrying systems.

info@ckcabletray.com
+90 542 123 35 75



/ Support Systems / Cable Tray Carrier

PRODUCT CODE	HEIGHT	WIDTH	LENGTH	THICKNESS ± %10	WEIGHT(KG/PCS)
SW4 050 P	125	43	60	2,0	0,138
SW4 100 P	125	43	110	2,0	0,185
SW4 160 P	125	43	160	2,0	0,240
SW4 200 P	125	43	210	2,0	0,277
SW4 260 P	125	43	270	2,0	0,332
SW4 300 P	125	43	310	2,0	0,369



(PG/HDG) Y Type Tray Carriers

Cable Trays , Cable Ladders , Wiremesh Cable Trays , Trunking Cable Trays

This product is designed for cable tray carrying system. It can be used for different purposes

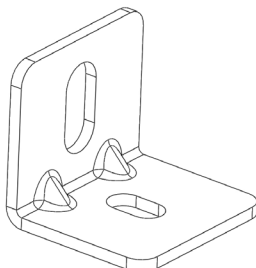
This product is used by fixing it to the Cable Tray with M8x15 Bolt / Nut.

Ergonomic operation in every assembly area with its suitable design for all cable carrying systems.

info@ckcabletray.com
+90 542 123 35 75

/ Support Systems / Y Type Tray Carriers

PRODUCT CODE	HEIGHT	WIDTH	LENGTH	THICKNESS ± %10	WEIGHT(KG/PCS)
BCM 050 P	58	40	50	1,2	0,066
BCM 100 P	58	40	100	1,2	0,085
BCM 200 P	58	40	200	1,2	0,123
BCM 050 H	58	40	50	1,2	0,070
BCM 100 H	58	40	100	1,2	0,091
BCM 200 H	58	40	200	1,2	0,131



(PG/HDG) L Type Tray Carriers

Cable Trays , Cable Ladders , Wiremesh Cable Trays , Trunking Cable Trays

This product is designed for cable tray carrying system. It can be used for different purposes

This product is used by fixing it to the Cable Tray with M8x15 Bolt / Nut.

Ergonomic operation in every assembly area with its suitable design for all cable carrying systems.

info@ckcabletray.com
+90 542 123 35 75

/ Support Systems / L Type Tray Carrier

PRODUCT CODE	HEIGHT	WIDTH	LENGTH	THICKNESS ± %10	WEIGHT(KG/PCS)
BCM 3 P	40	45	40	3,0	0,085
BCM 3 H	40	45	40	3,0	0,091

(PG/HDG) U Type Tray Carriers

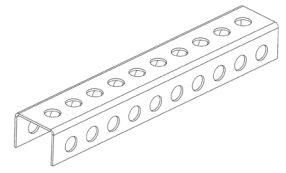
Cable Trays , Cable Ladders , Wiremesh Cable Trays , Trunking Cable Trays

This product is designed for cable tray carrying system. It can be used for different purposes

This product is used by fixing it to the Cable Tray with M8x15 Bolt / Nut.

Ergonomic operation in every assembly area with its suitable design for all cable carrying systems.

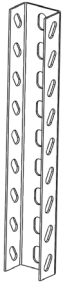
info@ckcabletray.com
+90 542 123 35 75



/ Support Systems / PG U Type Tray Carriers

PRODUCT CODE	HEIGHT	WIDTH	LENGTH	THICKNESS ± %10	WEIGHT(KG/PCS)
U30152 P	25	35	150	1,2	0,100
U30155 P	25	35	150	1,5	0,135
U30172 P	25	35	170	1,2	0,120
U30175 P	25	35	170	1,5	0,155
U30212 P	25	35	210	1,2	0,150
U30215 P	25	35	210	1,5	0,190
U30222 P	25	35	220	1,2	0,155
U30225 P	25	35	220	1,5	0,200
U30252 P	25	35	250	1,2	0,175
U30255 P	25	35	250	1,5	0,225
U30352 P	25	35	350	1,2	0,250
U30355 P	25	35	350	1,5	0,315
U30460 P	25	35	460	2,0	0,535
U30560 P	25	35	560	2,0	0,650
U30660 P	25	35	660	2,0	0,765





(PG / HDG) U Profile

Cable Trays , Cable Ladders , Wiremesh Cable Trays , Trunking Cable Trays

This product is designed for cable tray carrying system. It can be used for different purposes

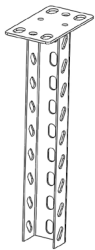
This product is used by fixing it to the Cable Tray with M8x15 Bolt / Nut.

Ergonomic operation in every assembly area with its suitable design for all cable carrying systems.

info@ckcabletray.com
+90 542 123 35 75

/ Support Systems / U Profiles

PRODUCT CODE	HEIGHT	WIDTH	LENGTH	THICKNESS ± %10	WEIGHT(KG/MT)
U5 300 5R P	30	50	3000	1,5	1,085
U5 300 0R P	30	50	3000	2,0	1,396
U5 300 5R H	30	50	3000	1,5	1,176



(HDG) U Hanging Support Ceiling (Welded)

Cable Trays , Cable Ladders , Wiremesh Cable Trays , Trunking Cable Trays

This product is designed for cable tray carrying system. It can be used for different purposes

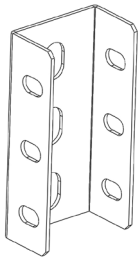
This product is used by fixing it to the Cable Tray with M8x15 Bolt / Nut.

Ergonomic operation in every assembly area with its suitable design for all cable carrying systems.

info@ckcabletray.com
+90 542 123 35 75

/ Support Systems / U Hanging Support Ceiling (Welded)

PRODUCT CODE	HEIGHT	WIDTH	LENGTH	THICKNESS ± %10	WEIGHT(KG/PCS)
U5 050 0UC H	30	50	500	2,0	0,935
U5 100 0UC H	30	50	1000	2,0	1,670
U5 300 0UC H	30	50	3000	2,0	4,600



(PG / HDG) U Profile Connector (Vertical)

Cable Trays , Cable Ladders , Wiremesh Cable Trays , Trunking Cable Trays

This product is designed for cable tray carrying system. It can be used for different purposes

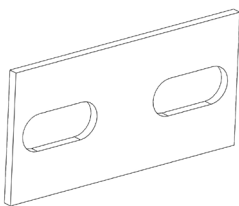
This product is used by fixing it to the Cable Tray with M8x15 Bolt / Nut.

Ergonomic operation in every assembly area with its suitable design for all cable carrying systems.

info@ckcabletray.com
+90 542 123 35 75

/ Support Systems / U Profile Connectors

PRODUCT CODE	HEIGHT	WIDTH	LENGTH	THICKNESS ± %10	WEIGHT(KG/PCS)
U5 110 20 P	32	51	110	2,0	0,175
U5 110 20 H	32	51	110	2,0	0,184



(PG / HDG) Double U Profiles Connector

Cable Trays , Cable Ladders , Wiremesh Cable Trays , Trunking Cable Trays

This product is designed for cable tray carrying system. It can be used for different purposes

This product is used by fixing it to the Cable Tray with M8x15 Bolt / Nut.

Ergonomic operation in every assembly area with its suitable design for all cable carrying systems.

info@ckcabletray.com
+90 542 123 35 75

/ Support Systems / U Profiles

PRODUCT CODE	HEIGHT	WIDTH	LENGTH	THICKNESS ± %10	WEIGHT(KG/PCS)
U5 060 20 P	30	60		2,0	0,030
U5 060 20 H	30	60		2,0	0,033

(PG / HDG) U Support Brackets

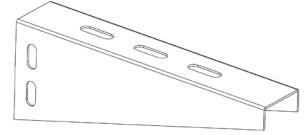
Cable Trays , Cable Ladders , Wiremesh Cable Trays , Trunking Cable Trays

This product is designed for cable tray carrying system. It can be used for different purposes

This product is used by fixing it to the Cable Tray with M8x15 Bolt / Nut.

Ergonomic operation in every assembly area with its suitable design for all cable carrying systems.

info@ckcabletray.com
+90 542 123 35 75



/ Support Systems / U Support Brackets

PRODUCT CODE	HEIGHT	WIDTH	LENGTH	THICKNESS ± %10	WEIGHT(KG/PCS)
U5 100 US P	80	44	130	1,2	0,109
U5 200 US P	80	44	230	1,2	0,193
U5 300 US P	80	44	330	1,5	0,305
U5 400 US P	80	44	430	1,5	0,434
U5 500 US P	80	44	530	2,0	1,131
U5 600 US P	80	44	630	2,0	1,345
U5 100 US H	80	44	130	1,2	0,120
U5 200 US H	80	44	230	1,2	0,213
U5 300 US H	80	44	330	1,5	0,337
U5 400 US H	80	44	430	1,5	0,479
U5 500 US H	80	44	530	2,0	1,250
U5 600 US H	80	44	630	2,0	1,486

(PG / HDG) U Hanging Support (Adjustable)

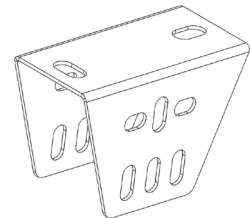
Cable Trays , Cable Ladders , Wiremesh Cable Trays , Trunking Cable Trays

This product is designed for cable tray carrying system. It can be used for different purposes

This product is used by fixing it to the Cable Tray with M8x15 Bolt / Nut.

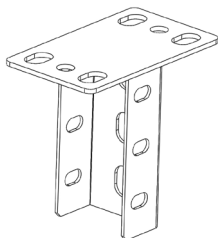
Ergonomic operation in every assembly area with its suitable design for all cable carrying systems.

info@ckcabletray.com
+90 542 123 35 75



/ Support Systems / U Hanging Support (Adjustable)

PRODUCT CODE	HEIGHT	WIDTH	LENGTH	THICKNESS ± %10	WEIGHT(KG/PCS)
U5 UH P	77	115	100	2,0	0,342
U5 UH H	77	115	100	2,0	0,378



(PG / HDG) U Hanging Support (Welded)

Easy Connector / No Cover Clamp / No Connection Coupler

This product is designed for cable tray carrying system. It can be used for different purposes

This product is used by fixing it to the Cable Tray with M8x15 Bolt / Nut.

Ergonomic operation in every assembly area with its suitable design for all cable carrying systems.

info@ckcabletray.com
+90 542 123 35 75

/ Support Systems / U Hanging Support (Welded)

PRODUCT CODE	HEIGHT	WIDTH	LENGTH	THICKNESS ± %10	WEIGHT(KG/PCS)
U5 UHW H	32	51	110	2,0	0,357



(PG / HDG) Grounding Strap

Cable Trays , Cable Ladders , Wiremesh Cable Trays , Trunking Cable Trays

info@ckcabletray.com
+90 542 123 35 75

/ PG Grounding Strap

PRODUCT CODE	CONDUCTOR (MM)	LENGHT(MT)	WEIGHT(KG/MT)
TGS-303 P	30x3	50	0,730
TGS-335 P	30x3,5	50	0,850
TGS-304 P	30x4	50	0,960
TGS-305 P	30x5	10	1,200
TGS-353 P	35x3	50	0,850
TGS-254 P	25x4	50	0,800
TGS-403 P	40x3	50	0,960
TGS-404 P	40x4	40	1,300
TGS-405 P	40x5	40	1,600
TGS-504 P	50x4	40	1,600
TGS-505 P	50x5	40	2,000



(PG / HDG) Grounding Strap

Cable Trays , Cable Ladders , Wiremesh Cable Trays , Trunking Cable Trays

info@ckcabletray.com
+90 542 123 35 75

/ PG Grounding Strap

PRODUCT CODE	CONDUCTOR (MM)	LENGHT(MT)	WEIGHT(KG/MT)
TGS-303 H	30x3	6	0,730
TGS-335 H	30x3,5	6	0,850
TGS-304 H	30x4	6	0,960
TGS-305 H	30x5	6	1,200
TGS-353 H	35x3	6	0,850
TGS-254 H	25x4	6	0,800
TGS-403 H	40x3	6	0,960
TGS-404 H	40x4	6	1,300
TGS-405 H	40x5	6	1,600
TGS-504 H	50x4	6	1,600
TGS-505 H	50x5	6	2,000
TGS-506 H	50X6	6	2,400
TGS-605 H	60X5	6	2,400



Earthing Connector-Cu

Cable Trays , Cable Ladders , Wiremesh Cable Trays , Trunking Cable Trays

It is a connection part for C Profiles. It is for the use of the assembly of Cable Trays in different functions.

This product is a cable tray carrier system accessory. It can be used for different purposes.

Ergonomic operation in every assembly area with its suitable design for all cable carrying systems.

info@ckcabletray.com
+90 542 123 35 75

/ Hardwares / Earthing Connector-Cu

PRODUCT CODE	LENGTH	THICKNESS	WEIGHT(KG/PCS)
EC70CU	70	0,8	0,050



Earthing Connector-Tin

Cable Trays , Cable Ladders , Wiremesh Cable Trays , Trunking Cable Trays

It is a connection part for C Profiles. It is for the use of the assembly of Cable Trays in different functions.

This product is a cable tray carrier system accessory. It can be used for different purposes.

Ergonomic operation in every assembly area with its suitable design for all cable carrying systems.

info@ckcabletray.com
+90 542 123 35 75

/ Hardwares / Earthing Connector-Tin

PRODUCT CODE	LENGTH	THICKNESS	WEIGHT(KG/PCS)
EC70TN	70	0,8	0,050



Bonding Jumper-1 Cu & Tin

Cable Trays , Cable Ladders , Wiremesh Cable Trays , Trunking Cable Trays

It is a connection part for C Profiles. It is for the use of the assembly of Cable Trays in different functions.

This product is a cable tray carrier system accessory. It can be used for different purposes.

Ergonomic operation in every assembly area with its suitable design for all cable carrying systems.

info@ckcabletray.com
+90 542 123 35 75

/ Hardwares / Bonding Jumper-1 Cu & Tin

PRODUCT CODE	LENGTH	METRIC	SECTION
BJ1100CU	100	M6	10
BJ1210CU	210	M6	10
BJ1100TN	100	M6	10
BJ1100TN	210	M6	10



Bonding Jumper-2 Cu & Tin

Cable Trays , Cable Ladders , Wiremesh Cable Trays , Trunking Cable Trays

It is a connection part for C Profiles. It is for the use of the assembly of Cable Trays in different functions.

This product is a cable tray carrier system accessory. It can be used for different purposes.

Ergonomic operation in every assembly area with its suitable design for all cable carrying systems.

info@ckcabletray.com
+90 542 123 35 75

/ Hardwares / Bonding Jumper-1 Cu & Tin

PRODUCT CODE	LENGTH	METRIC	SECTION
BJ2100CU	100	M8	10
BJ2210CU	210	M8	10
BJ2280CU	280	M8	10
BJ2100TN	100	M8	10
BJ2210TN	210	M8	10
BJ2280TN	280	M8	10



(HDG) EARTHING ELECTRODE

Cable Trays , Cable Ladders , Wiremesh Cable Trays , Trunking Cable Trays

info@ckcabletray.com
+90 542 123 35 75

/ PG Earthing Electrode

PRODUCT CODE	THICKNESS (MM)	SIZE	LENGTH (MM)	WEIGHT(KG/PCS)
TEE 40X40X4-10	4,0	40X40	1000	2,515
TEE 40X40X4-15	4,0	40X40	1500	3,770
TTE 50x50x4 -10	4,0	50X50	1000	3,140
TEE 50X50X4-15	4,0	50X50	1500	4,710
TEE 60X60X4-10	4,0	60X60	1000	3,770
TEE 60X60X4-15	4,0	60X60	1500	5,655
TEE 40X40X5-10	5,0	40X40	1000	3,140
TEE 40X40X5-15	5,0	40X40	1500	4,710



(HDG) Jointing Clamp

Cable Trays , Cable Ladders , Wiremesh Cable Trays , Trunking Cable Trays

info@ckcabletray.com
+90 542 123 35 75

/ Jointing Clamp

PRODUCT CODE	CONTUCTOR	SECTION	WEIGHT(KG/pcs)
TKJC-1	16-20	30x3	0,080
TKJC-2	22-26	30x3	0,080
TKJC-3	28-32	30x3	0,090
TKJC-4	16-20	30x3	0,120
TKJC-5	26-32	30x3	0,400

(PG) ACTIVE LIGHTNING ARRESTER

Cable Trays , Cable Ladders , Wiremesh Cable Trays , Trunking Cable Trays

info@ckcabletray.com
+90 542 123 35 75

/ Active Lightning Arrester



PRODUCT CODE	SIZE	LENGHTS	WEIGHT(KG/PCS)
TACL-1	0,85 M	60	9,360
TACL-2	75X37X111		0,130
TACL-3		5	0,300
TACL-4		10	0,600